



info@independentimaging.org

800-543-4424

Choose the shape, size and style to meet your needs!

- Sponges are used to provide comfortable positioning of the patient or to support a particular focal area of the body.
- Coated sponges** are made of **Antimicrobial "Ultra Fresh."**
- Sponges are available in standard, coated and bariatric styles.



NON-COATED STANDARD GRAY SPONGE

Soft, open cell, polyurethane foam provides excellent support and comfort. This foam has minimal attenuation, is fire retardant, and has been the industry standard for decades.



COATED STANDARD SPONGE

This is the same standard gray sponge outlined above, but is coated with a medical-grade, durable and easy-to-clean vinyl surface that is resistant to blood, Betadine®, barium, alcohol, oils and other fluids. Attenuation is very low (*edges may show, depending on techniques using low kVp*). Ideal for sterile environments.



NON-COATED HIGH-DENSITY SPONGE (See Bariatric Section)

These large-sized blocks are specifically designed to provide extra firm support for bariatric and athletic patient positioning. Coated versions are also available.

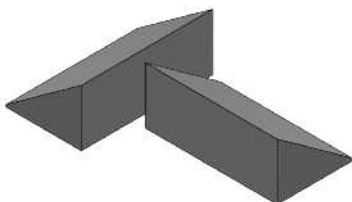
WEDGE POSITIONING SPONGES

NON-COATED STANDARD GRAY SPONGE

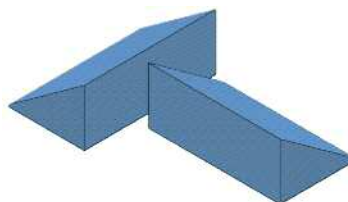
COATED STANDARD SPONGE

(For COATED SPONGES ONLY: edges may appear on images.)

#UFBE
\$12.50/set

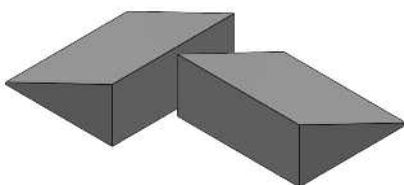


34° WEDGE (SET OF 2)
4 X 7 X 3

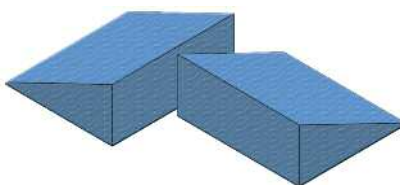


#UCBE
\$45.00/set

#UFBH
\$16.50/set

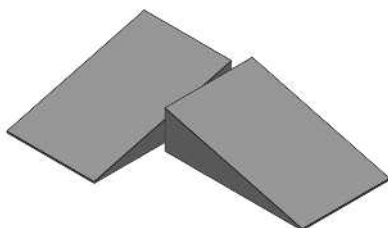


16° WEDGE (SET OF 2)
7 X 8 X 3.5

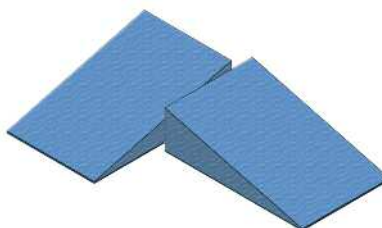


#UCBH
\$84.00/set

#UFBI
\$14.50/set

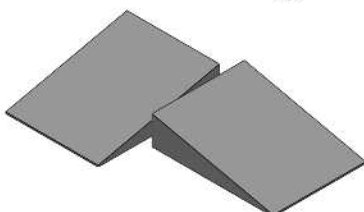


15° WEDGE (SET OF 2)
11 X 7 X 3

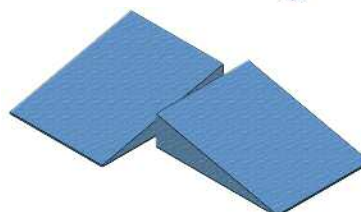


#UCBI
\$108.00/set

#UFBJ
\$13.50/set



12° WEDGE (SET OF 2)
9.5 X 7.25 X 2.25

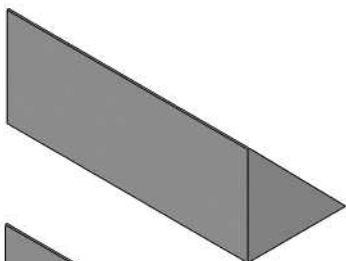


#UCBJ
\$80.00/set

WEDGE POSITIONING SPONGES

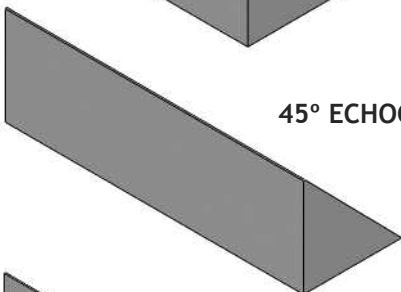
NON-COATED STANDARD GRAY SPONGE

#UFEA
\$30.00



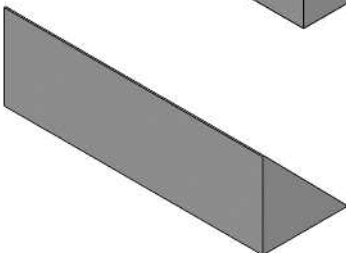
45° SPINAL WEDGE
9.5 X 24 X 9.5

#UFEE
\$35.00



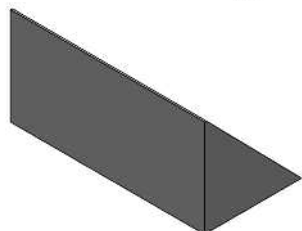
45° ECHOCARDIOGRAPHY WEDGE
9 X 30 X 9

#UFBD
\$30.00



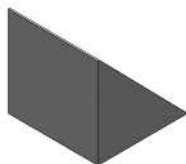
45° SPINAL WEDGE
7 X 21.5 X 7

#UFBB
20.00



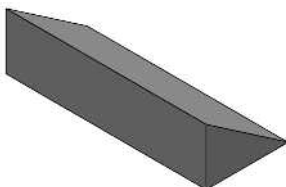
45° WEDGE
7 X 14 X 7

#UFBC
\$17.50



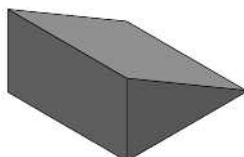
45° WEDGE
7 X 7 X 7

#UFBU
\$27.50



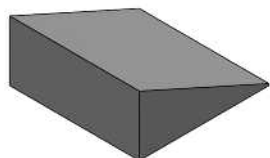
30°-60°-90° MULTI-ANGLE
10 X 24 X 6

#UFBF
\$18.50



27° WEDGE
10 X 10 X 6

#UFBG
\$11.50

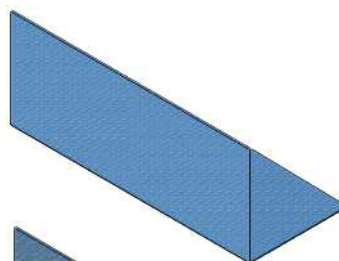


21° WEDGE
10 X 10 X 4.63

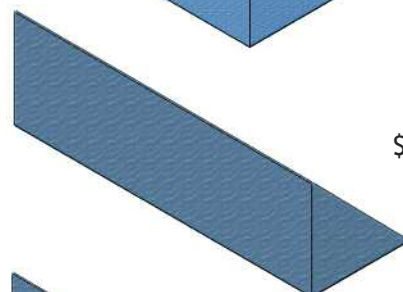
COATED STANDARD SPONGE

(For COATED SPONGES ONLY:
edges may appear on images.)

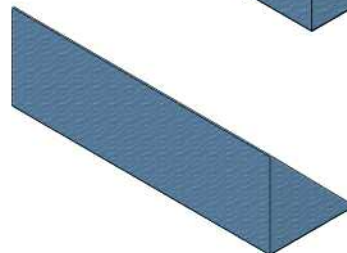
#UCEA
\$120.00



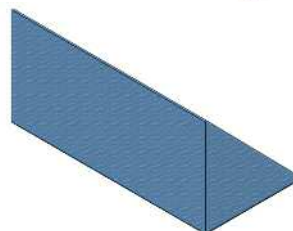
#UCEE
\$128.00



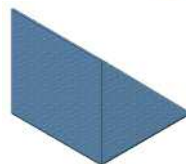
#UCBD
\$106.00



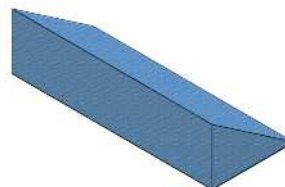
#UCBB
\$73.50



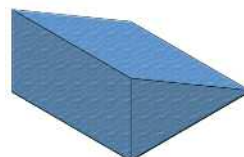
#UCBC
\$47.50



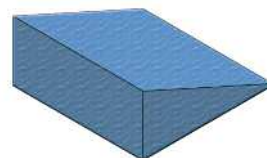
#UCBU
\$195.00



#UCBF
\$63.00



#UCBG
\$67.50



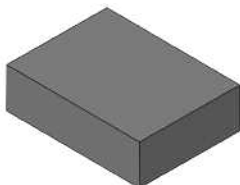
RECTANGLE POSITIONING SPONGES

NON-COATED STANDARD GRAY SPONGE

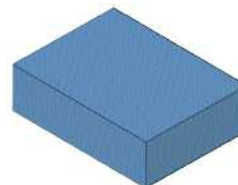
COATED STANDARD SPONGE

(For COATED SPONGES ONLY:
edges may appear on images.)

#UFBL
\$11.50



3" RECTANGLE
7.5 X 10 X 3



#UCBL
\$42.50

#UFBN
\$31.50



3" RECTANGLE
14 X 18 X 3

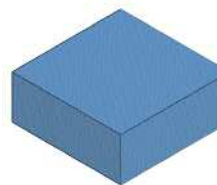


#UCBN
\$156.00

#UFBO
\$22.50

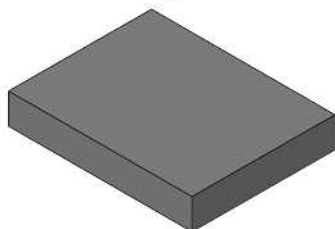


4" SQUARE SPONGE
10 X 10 X 4

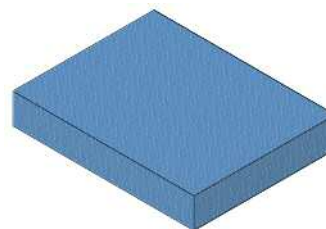


#UCBO
\$70.50

#UFBY
\$52.00



4" SQUARE SPONGE
18 X 24 X 4



#UCBY
\$198.00

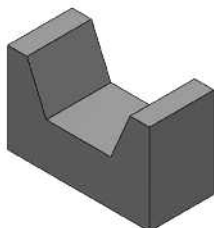
BODY/TORSO POSITIONING SPONGES

NON-COATED STANDARD GRAY SPONGE

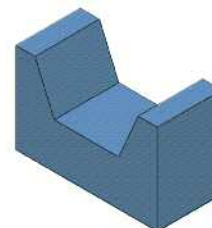
COATED STANDARD SPONGE

(For COATED SPONGES ONLY:
edges may appear on images.)

#UFAW
\$149.00

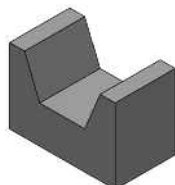


ADULT MYELOGRAM BLOCK
10 X 22 X 14

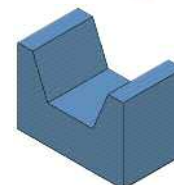


#UCAW
\$287.00

#UFAX
\$61.00



CHILD MYELOGRAM BLOCK
8 X 14 X 10



#UCAX
\$120.00

#UFAY
\$69.00



ANGULAR BOLSTER
12.5 X 16 X 7.25



#UCAY
\$149.00

HEAD/NECK POSITIONING SPONGES

NON-COATED STANDARD GRAY SPONGE

COATED STANDARD SPONGE

(For COATED SPONGES ONLY:
edges may appear on images.)

#UFAK
\$11.50

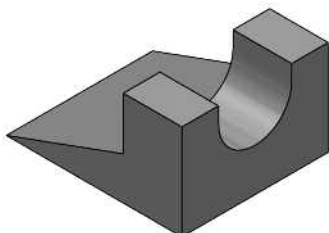


CIRCULAR HEAD BLOCK
7 X 1.5

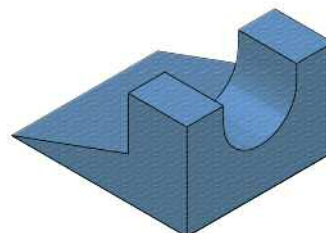


#UCAK
\$26.00

#UFAL
\$35.00

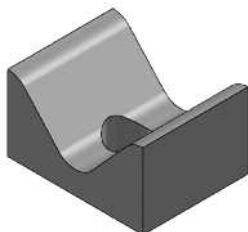


HEAD & NECK SUPPORT
12 X 10 X 6.5

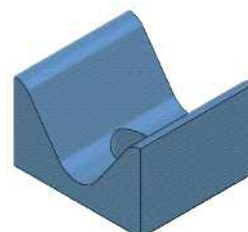


#UCAL
\$77.00

#UFAM
\$47.50

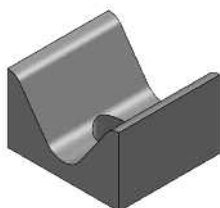


AP/PA ADULT HEAD HOLDER
10 X 11 X 6.75

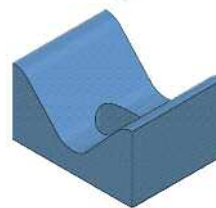


#UCAM
\$126.00

#UFAN
\$34.00

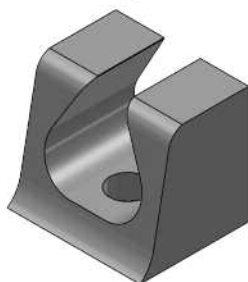


AP/PA CHILD HEAD HOLDER
7 X 9 X 5

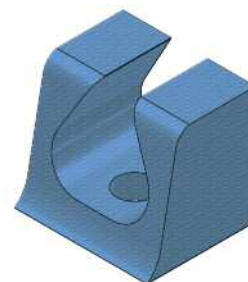


#UCAN
\$77.00

#UFAP
\$77.50



ADULT HEAD IMMOBILIZER
9 X 11 X 9.75

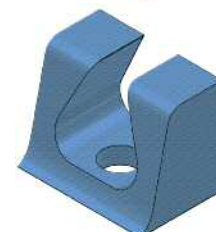


#UCAP
\$152.00

#UFAQ
\$49.00

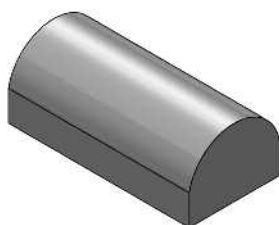


CHILD HEAD IMMOBILIZER
6 X 9 X 7

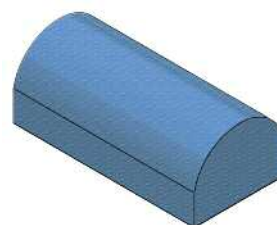


#UCAQ
\$84.00

#UFAR
\$20.00



CERVICAL HEAD REST
6 X 12 X 4.5



#UCAR
\$69.00

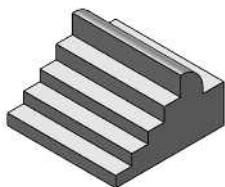
EXTREMITY POSITIONING SPONGES

NON-COATED STANDARD GRAY SPONGE

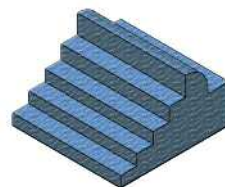
COATED STANDARD SPONGE

(For COATED SPONGES ONLY:
edges may appear on images.)

#UFAA
\$11.50

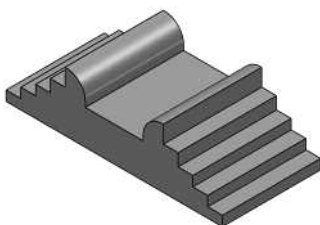


ADULT OBLIQUE
FINGER BLOCK

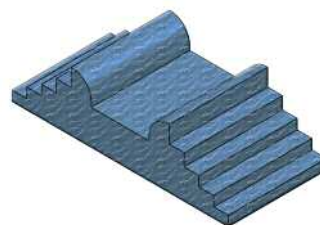


#UCAA
\$29.00

#UFAB
\$24.00

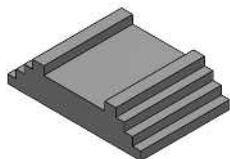


BILATERAL ADULT
OBLIQUE FINGER BLOCK



#UCAB
\$50.00

#UFAC
\$10.00

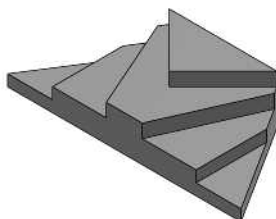


BILATERAL PEDIATRIC
OBLIQUE FINGER BLOCK

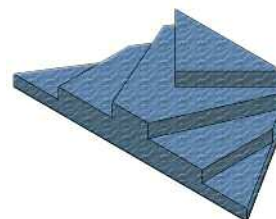


#UCAC
\$22.50

#UFAD
\$19.00

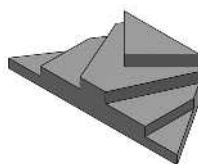


ADULT LATERAL
FINGER BLOCK

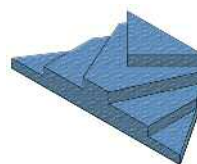


#UCAD
\$66.50

#UFAE
\$16.50

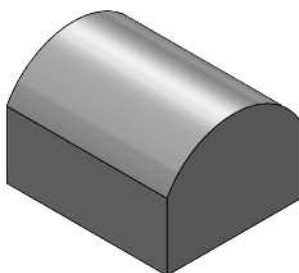


PEDIATRIC LATERAL
FINGER BLOCK

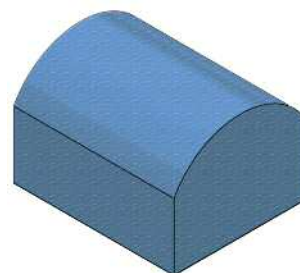


#UCAE
\$34.00

#UFAH
\$40.00

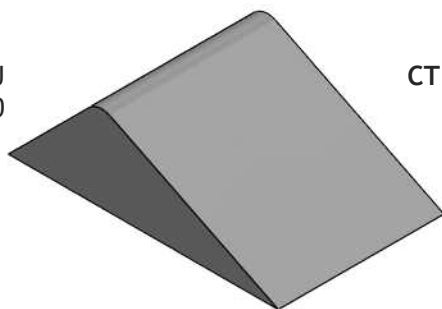


KNEE ARTHROGRAM BLOCK
10 X 12 X 8

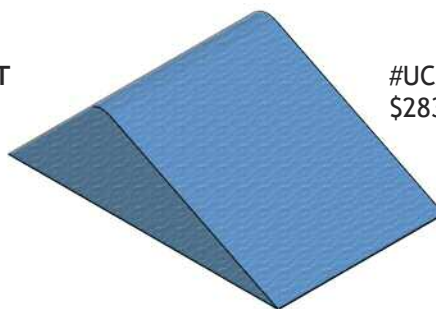


#UCAH
\$117.00

#UFAJ
\$97.50



CT KNEE WEDGE SUPPORT
22 X 13.5 X 7



#UCAJ
\$283.00

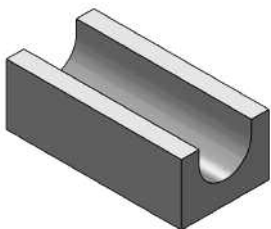
EXTREMITY POSITIONING SPONGES

NON-COATED STANDARD GRAY SPONGE

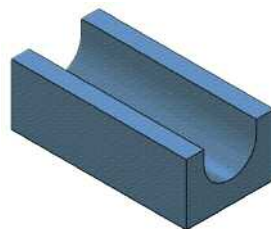
COATED STANDARD SPONGE

(For COATED SPONGES ONLY:
edges may appear on images.)

#UFAF
\$61.50

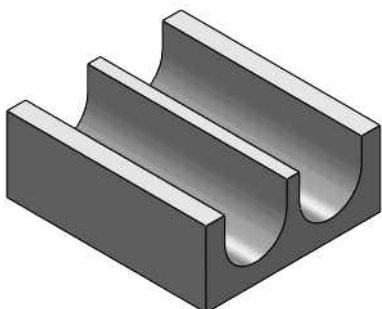


LEG IMMOBILIZER
10 X 20 X 7

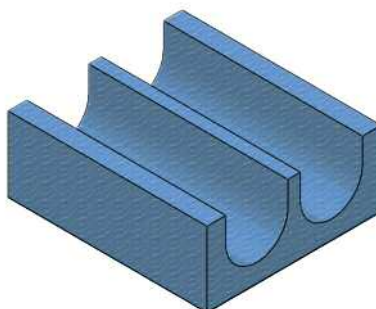


#UCAF
\$206.00

#UFAG
\$108.00

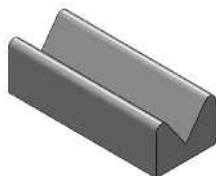


BILATERAL LEG IMMOBILIZER
14 X 16 X 6



#UCAG
\$211.00

#UFCA
\$21.00

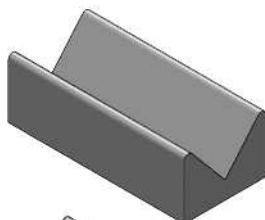


SMALL EXTREMITY BLOCK
3 X 4 X 10

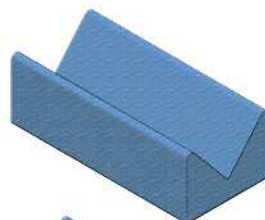


#UCCA
\$49.00

#UFCB
\$35.00

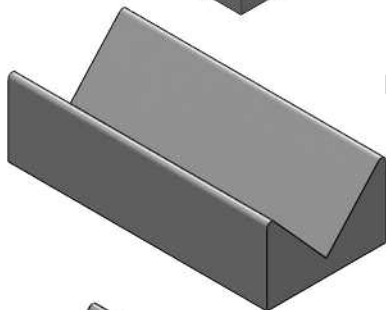


MEDIUM EXTREMITY BLOCK
5 X 7 X 15

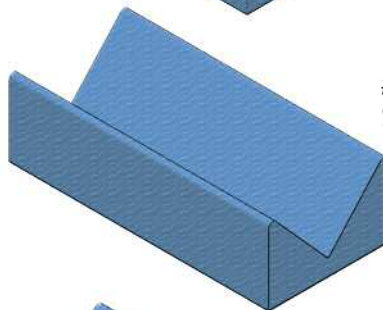


#UCCB
\$108.00

#UFCC
\$66.50

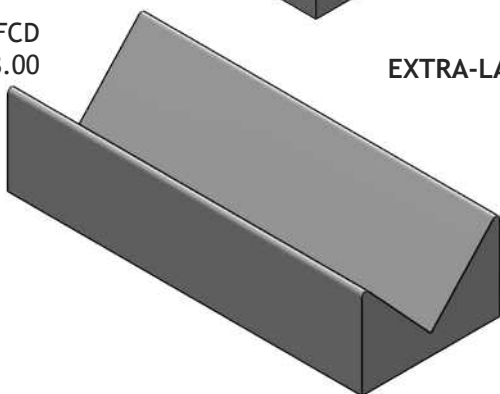


LARGE EXTREMITY BLOCK
7 X 11 X 24

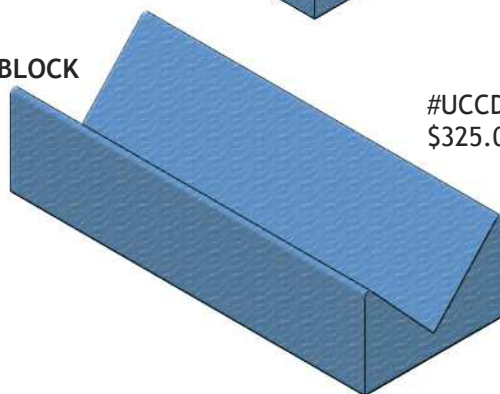


#UCCC
\$245.00

#UFCD
\$118.00



EXTRA-LARGE EXTREMITY BLOCK
9 X 14 X 36



#UCCD
\$325.00

BARIATRIC POSITIONING SPONGES

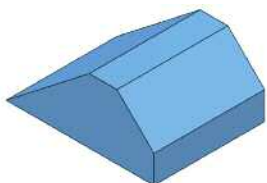
HIGH-DENSITY SPONGE: These positioning blocks are specifically designed to provide extra firm support for bariatric and athletic patient positioning.

NON-COATED

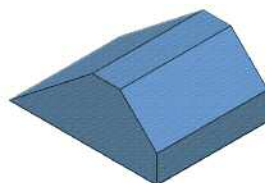
COATED

(For COATED SPONGES ONLY:
edges may appear on images.)

#UBAT
\$46.00

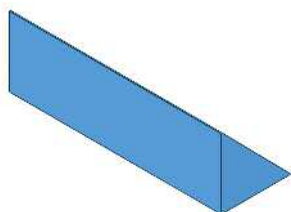


BARIATRIC TORSO BOLSTER
16 X 12 X 7

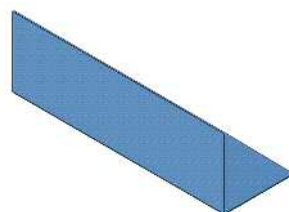


#UCAT
\$133.00

#UBBA
\$33.00

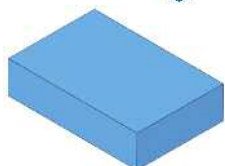


BARIATRIC 45° SPINAL WEDGE
7 X 21.25 X 7



#UCBA
\$107.00

#UBBM
\$19.00

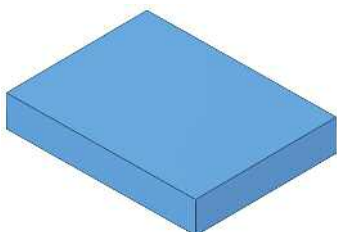


BARIATRIC RECTANGLE
8 X 12 X 3

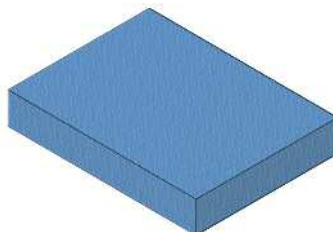


#UCBM
\$53.00

#UBBP
\$79.00



DECUBITUS PAD
18 X 24 X 4



#UCBP
\$179.00

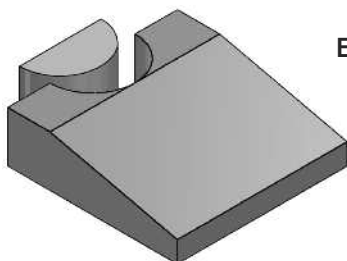
SPECIALTY POSITIONING SPONGES

NON-COATED STANDARD GRAY SPONGE

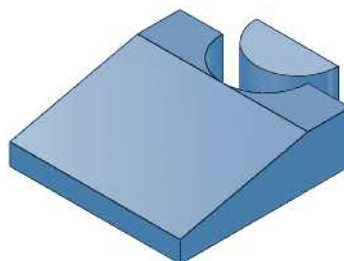
COATED STANDARD SPONGE

(For COATED SPONGES ONLY:
edges may appear on images.)

#UFBX
\$99.00

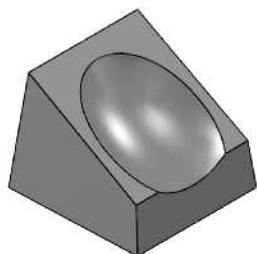


ENDO-ULTRASOUND WEDGE
20 X 20 X 6

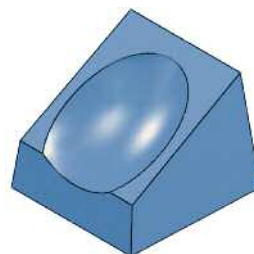


#UCBX
\$312.00

#UFBW
\$99.00



CT HEADREST
11 X 12.5 X 10



#UCBW
\$217.00

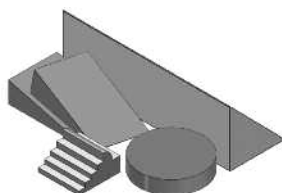
GENERAL SPONGE KITS

(For COATED SPONGES ONLY:
edges may appear on images.)

NON-COATED STANDARD GRAY SPONGE

COATED STANDARD SPONGE

#UKGP
\$68.00

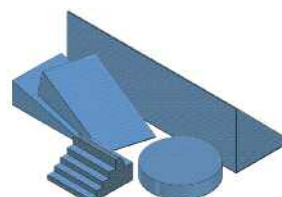


GENERAL KIT P

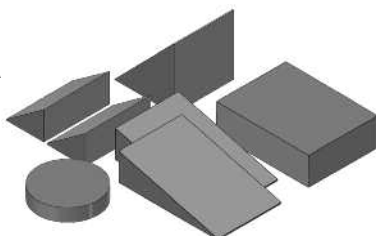
Uncoated **OR** Coated Kit includes:

UNCOATED	DESCRIPTION	COATED
UFBD	45° Spine Wedge (7x21.5x7)	UCBD
UFBI	15° Wedge (11x7x3)	UCBI
UFAK	Circular Head Block	UCAK
UFAA	Oblique Finger Block	UCAA

#USGP
\$272.00



#UKGA
\$61.00

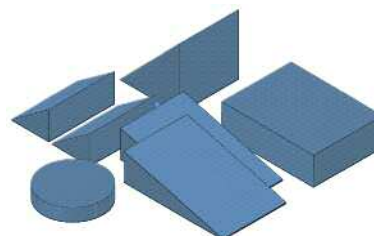


GENERAL KIT A

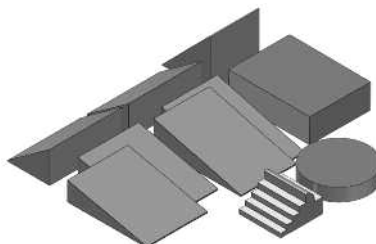
Uncoated **OR** Coated Kit includes:

UNCOATED	DESCRIPTION	COATED
UFAK	Circular Head Block	UCAK
UFBC	45° Wedge (7x7x7)	UCBC
UFBE	(2) 34° Wedge ((4x7x3)	UCBE
UFBI	(2) 15° Wedge (11x7x3)	UCBI
UFBL	Rectangle (7.5x10x3)	UCBL

#USGA
\$232.00



#UKGB
\$86.00

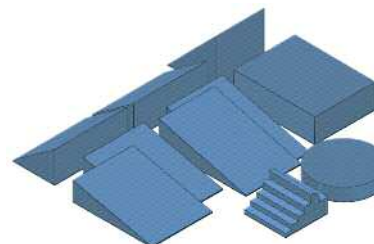


GENERAL KIT B

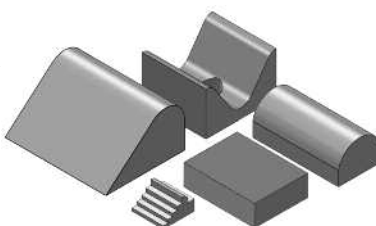
Uncoated **OR** Coated Kit includes:

UNCOATED	DESCRIPTION	COATED
UFAA	Adult Obl Finger Block	UCAA
UFAK	Circular Head Block	UCAK
UFBC	45° Wedge (7x7x7)	UCBC
UFBE	(2) 34° Wedge ((4x7x3)	UCBE
UFBI	(2) 15° Wedge (11x7x3)	UCBI
UFBJ	(2) 12° Wedge (9.5x7.25x2.25)	UCBJ
UFBL	Rectangle (7.5x10x3)	UCBL

#USGB
\$343.00



#UKGC
\$140.00

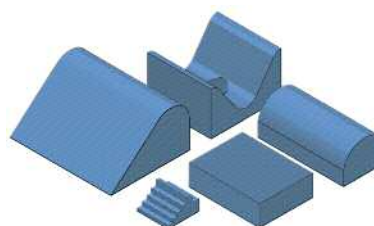


GENERAL KIT C

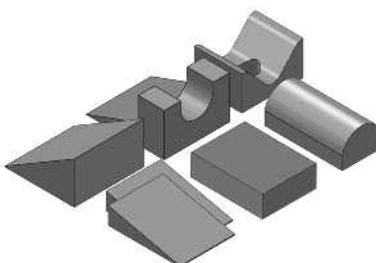
Uncoated **OR** Coated Kit includes:

UNCOATED	DESCRIPTION	COATED
UFAA	Adult Obl Finger Block	UCAA
UFAM	AP/PA Adult Head Holder	UCAM
UFAR	Cervical Head Rest	UCAR
UFAY	Angular Bolster	UCAY
UFBL	Rectangle (7.5x10x3)	UCBL

#USGC
\$369.00



#UKGD
\$124.00

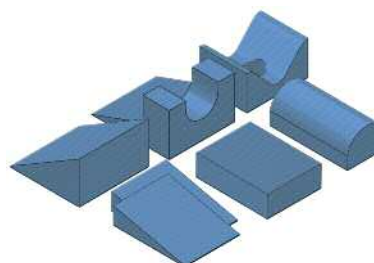


GENERAL KIT D

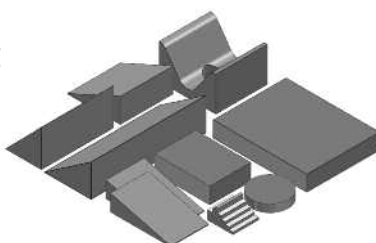
Uncoated **OR** Coated Kit includes:

UNCOATED	DESCRIPTION	COATED
UFAL	Head & Neck Support	UCAL
UFAN	AP/PA Child Head Holder	UCAN
UFAR	Cervical Head Rest	UCAR
UFBF	27° Wedge (10x10x6)	UCBF
UFBJ	(2) 12° Wedge (9.5x7.25x2.25)	UCBJ
UFBL	Rectangle (7.5x10x3)	UCBL

#USGD
\$326.00



#UKGE
\$177.00

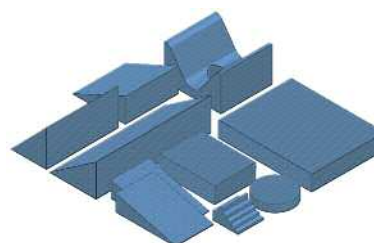


GENERAL KIT E

Uncoated **OR** Coated Kit includes:

UNCOATED	DESCRIPTION	COATED
UFAA	Adult Obl Finger Block	UCAA
UFAK	Circular Head Block	UCAK
UFAM	AP/PA Adult Head Holder	UCAM
UFBB	45° Wedge (7x14x7)	UCBB
UFBG	21° Wedge (10x10x4.63)	UCBG
UFBI	(2) 15° Wedge (11x7x3)	UCBI
UFBL	Rectangle (7.5x10x3)	UCBL
UFBN	Rectangle (14x18x3)	UCBN
UFBU	Multi-Angle Wedge	UCBU

#USGE
\$746.00



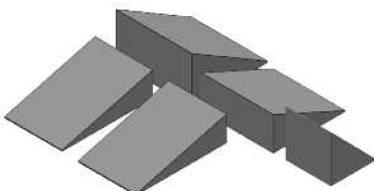
SPECIALTY SPONGE KITS

(For COATED SPONGES ONLY:
edges may appear on images.)

NON-COATED STANDARD GRAY SPONGE

COATED STANDARD SPONGE

#UKWA
\$56.00

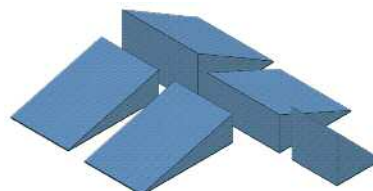


WEDGE KIT A

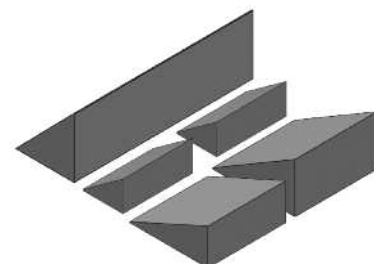
Uncoated **OR** Coated Kit includes:

UNCOATED	DESCRIPTION	COATED
UFBC	45° Wedge (7x7x7)	UCBC
UFBF	27° Wedge (10x10x6)	UCBF
UFBG	21° Wedge (10x10x4.63)	UCBG
UFBI	(2) 15° Wedge (11x7x3)	UCBI

#USWA
\$237.00



#UKWB
\$69.00

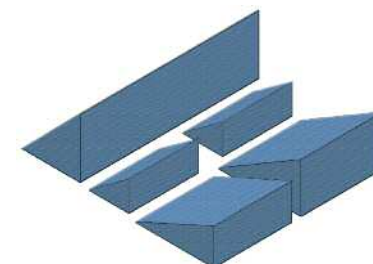


WEDGE KIT B

Uncoated **OR** Coated Kit includes:

UNCOATED	DESCRIPTION	COATED
UFBD	45° Spine Wedge (7x21.25x7)	UCBD
UFBE	(2) 34° Wedge ((4x7x3)	UCBE
UFBF	27° Wedge (10x10x6)	UCBF
UFBG	21° Wedge (10x10x4.63)	UCBG

#USWB
\$249.00



#UKRA
\$48.00



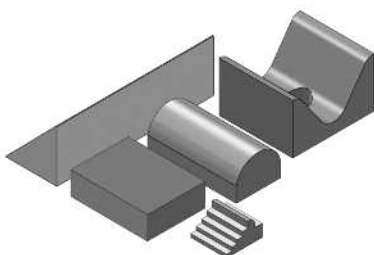
RECTANGLE KIT

Uncoated Kit includes:

UNCOATED	DESCRIPTION	COATED
UFBQ	(3) Rectangle (4x6x0.5)	N/A
UFBR	(3) Rectangle (4x6x1.0)	N/A
UFB S	(3) Rectangle (4x6x1.5)	N/A
UFBT	(3) Rectangle (4x6x2.0)	N/A

(Rectangle Kit A
is unavailable in
coated sponge.)

#UKOA
\$115.00

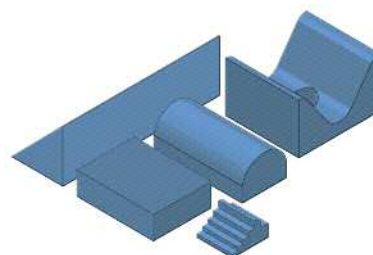


ORTHO KIT A

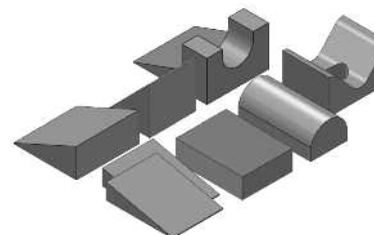
Uncoated **OR** Coated Kit includes:

UNCOATED	DESCRIPTION	COATED
UFAA	Adult Obl Finger Block	UCAA
UFAM	AP/PA Adult Head Holder	UCAM
UFAR	Cervical Head Rest	UCAR
UFBD	45° Spine Wedge (7x21.25x7)	UCBD
UFBL	Rectangle (7.5x10x3)	UCBL

#USOA
\$325.00



#UKOB
\$135.00

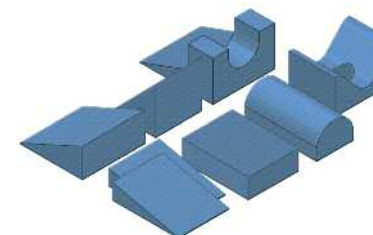


ORTHO KIT B

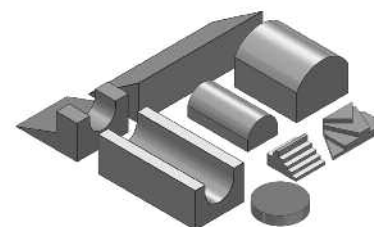
Uncoated **OR** Coated Kit includes:

UNCOATED	DESCRIPTION	COATED
UFAL	Head & Neck Support	UCAL
UFAN	AP/PA Child Head Holder	UCAN
UFAR	Cervical Head Rest	UCAR
UFBC	45° Wedge (7x7x7)	UCBC
UFBG	21° Wedge (10x10x4.63)	UCBG
UFBJ	(2) 12° Wedge (9.5x7.25x2.25)	UCBJ
UFBL	Rectangle (7.5x10x3)	UCBL

#USOB
\$362.00



#UKOC
\$217.00

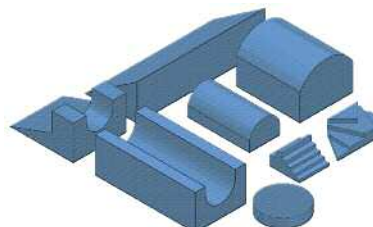


ORTHO KIT C

Uncoated **OR** Coated Kit includes:

UNCOATED	DESCRIPTION	COATED
UFAA	Adult Obl Finger Block	UCAA
UFAD	Adult Lateral Finger Block	UCAD
UFAF	Leg Immobilizer	UCAF
UFAH	Knee Arthrogram Block	UCAH
UFAK	Circular Head Block	UCAK
UFAL	Head & Neck Support	UCAL
UFAR	Cervical Head Rest	UCAR
UFBU	Multi-Angle Wedge	UCBU

#USOC
\$751.00

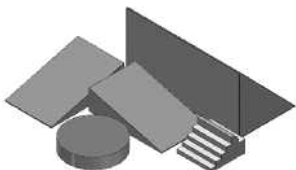


SPECIALTY SPONGE KITS

(For COATED SPONGES ONLY:
edges may appear on images.)

NON-COATED STANDARD GRAY SPONGE

#UKCA
\$54.00



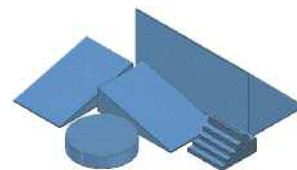
CLINIC KIT A

Uncoated **OR** Coated Kit includes:

UNCOATED	DESCRIPTION	COATED
UFBB	45° Wedge (7x14x7)	UCBB
UFAA	Adult Obl Finger Block	UCAA
UFAK	Circular Head Block	UCAK
UFBI	(2) 15° Wedge (11x7x3)	UCBI

COATED STANDARD SPONGE

#USCA
\$223.00

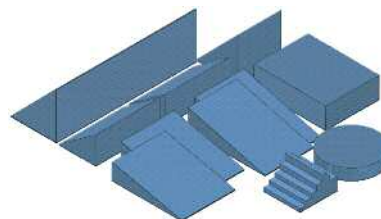


CLINIC KIT B

Uncoated **OR** Coated Kit includes:

UNCOATED	DESCRIPTION	COATED
UFAA	Adult Obl Finger Block	UCAA
UFAK	Circular Head Block	UCAK
UFBC	45° Wedge (7x7x7)	UCBC
UFBE	(2) 34° Wedge ((4x7x3)	UCBE
UFBI	(2) 15° Wedge (11x7x3)	UCBI
UFBJ	(2) 12° Wedge (9.5x7.25x2.25)	UCBJ
UFBL	Rectangle (7.5x10x3)	UCBL
UFBD	45° Wedge (7x21.5x7)	UCBD

#USCB
\$458.00

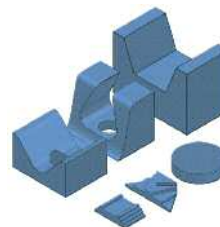


PEDIATRIC KIT

Uncoated Kit includes:

UNCOATED	DESCRIPTION	COATED
UFAC	Bilateral Child Obl Finger Block	UCAC
UFAE	Pediatric Lateral Finger Block	UCAE
UFAK	Circular Head Block	UCAK
UFAN	AP/PA Child Head Holder	UCAN
UFAQ	Child Head Immobilizer	UCAQ
UFAX	Child Myelogram Block	UCAX
UFBT	Rectangle (4x6x2)	N/A

#USPA
\$325.00
(USPA does not
include the
rectangle shown
in the UKPA.)

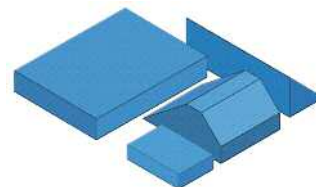


BARIATRIC KIT

Uncoated **OR** Coated Kit includes:

UNCOATED	DESCRIPTION	COATED
UBAT	Torso Bolster (16x12x7)	UCAT
UBBA	Spinal Wedge (7x21.5x7)	UCBA
UBBM	Rectangle (8x12x3)	UCBM
UBBP	Decubitus Pad (18x24x4)	UCBP

#USBA
\$533.00

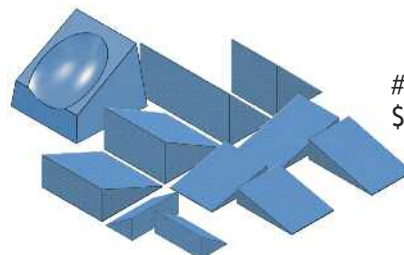


CT IMAGING KIT

Uncoated Kit includes:

UNCOATED	DESCRIPTION	COATED
UFBB	45° Wedge (7x14x7)	UCBB
UFBC	45° Wedge (7x7x7)	UCBC
UFBE	(2) 34° Wedge ((4x7x3)	UCBE
UFBF	27° Wedge (10x10x6)	UCBF
UFBG	21° Wedge (10x10x4.63)	UCBG
UFBI	(2) 15° Wedge (11x7x3)	UCBI
UFBJ	(2) 12° Wedge (9.5x7.25x2.25)	UCBJ
UFBW	CT Headrest	UCBW

#USCT
\$460.00



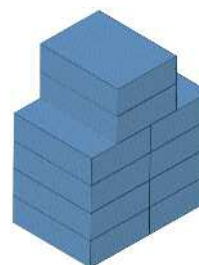
NEW!

ULTRASOUND KIT

Uncoated **OR** Coated Kit includes:

UNCOATED	DESCRIPTION	COATED
UFBL	(10) Rectangle (7.5x10x3)	UCBL

#USRC
\$395.00



#UKCT
\$102.00



#UKRC
\$95.00



Bolster Blocks



#UVFA



#UVFB



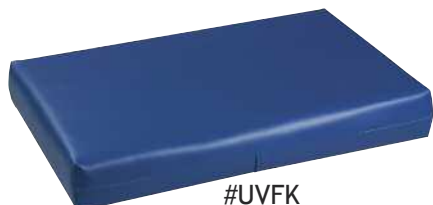
#UVFG



#UVFH



#UVFJ



#UVFK

NEW!

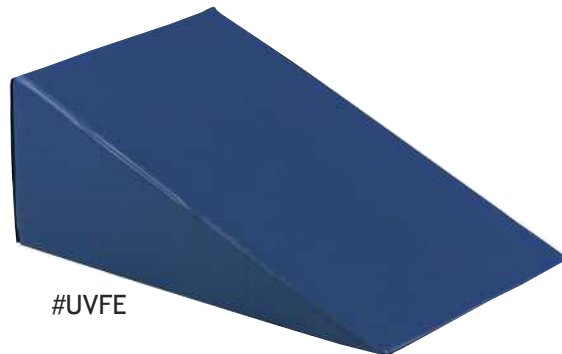
- Firm, high-density urethane foam.
- Royal Blue outer cover is durable, heavy gauge, reinforced vinyl.
- Seams are sewn and tear resistant.
- Easy to clean.
- Bolsters are *NOT RADIOLUCENT*.
- Excellent support for a wide variety of imaging needs.



#UVFC



#UVFD



#UVFE



#UVFF

cat.#	w x l x d	price
UVFA	12" x 8" dia.	119.00
UVFB	8" x 18" x 6"	90.00
UVFC	24" x 18" x 6"	155.00
UVFD	8" x 16" x 8"	185.00
UVFE	20" x 32" x 12"	209.00
UVFF	20" x 32" x 12"	279.00
UVFG	8" x 12" x 6"	76.00
UVFH	12" x 14" x 3"	48.00
UVFJ	8" x 12" x 3"	62.00
UVFK	20" x 13" x 3"	72.00

Bolsters are NOT RADIOLUCENT

- Unique visco-elastic material molds to patient's body shape and conforms to table platform.
- Meets specific requirements for MRI compatibility and safety with excellent radiolucent qualities.
- Antimicrobial cover with anti-slip undersurface - easy to clean and maintain.

MRI Positioners



Rectangle (2)
#MFP-01



Rectangle (2)
#MFP-02



Rectangle (2)
#MFP-05



Knee Wedge
#MFP-010



Wedge (2)
#MFP-03



Wedge (2)
#MFP-04



Curved Wedge (2)
#MFP-06



Neck Roll
#MFP-07

Additional MRI Positioners
can be found on page 56.

cat.#	w x l x d	price
MFP-01	14" x 3" x 1"	290.00
MFP-02	5" x 3" x 1"	290.00
MFP-03	10" x 10" x 3"	335.00
MFP-04	14" x 4" x 1.5"	335.00
MFP-05	3" x 4" x 2"	325.00
MFP-06	5.2" x 5.3" x 3"	350.00
MFP-07	3" x 7.3" x 2.3"	355.00
MFP-10	16" x 28.2" x 8"	685.00

MRI Table Pads

*Highest Quality Solution for Patient Comfort
and Safety for all MRI Exams!*



GE 1.5T & 3.0T

cat.#	w x l x d	price
MFP-20	15" x 72" x 0.625"	325.00
MFP-22	15" x 72" x 1.250"	325.00
MFP-24	15" x 27" x 1.250"	790.00

(MFP-24 is two pcs)



GE 0.2T, 0.35 & 0.7T

cat.#	w x l x d	price
MFP-30	29" x 14" x 0.625"	330.00
MFP-32	29" x 14" x 1.250"	420.00
MFP-34	29" x 28" x 1.250"	1125.00

(MFP-34 is two pcs)



Hitachi

cat.#	w x l x d	price
MFP-40	31" x 13.5" x 0.625"	325.00
MFP-42	31" x 27.0" x 0.625"	700.00
MFP-44	27" x 13.5" x 0.625"	325.00
MFP-46	31" x 13.5" x 1.250"	355.00
MFP-48	31" x 27.0" x 1.250"	955.00

(MFP-42 & MFP-48 are two pcs)




Philips, Siemens, Toshiba

cat.#	w x l x d	price
MFP-50	19.5" x 14" x 0.625"	325.00
MFP-52	19.5" x 14" x 1.250"	325.00
MFP-54	19.5" x 28" x 1.250"	795.00


(MFP-54 is two pcs)

Other Positioners & Pads are available. Call for quote.


MRI Positioner/Pad Complete Kits




#MFP-GE2




#MFP-GE3




#MFP-GE5




#MFP-GNK
(Includes: MFP-01, MFP-02, MFP-03, MFP-04, MFP-05, MFP-06)




#MFP-BBK




#MFP-GE4




#MFP-GE7




#MFP-HT1



#MFP-ST2



#MFP-PST



#MFP-PT3

cat.#	MRI Kit Description (# pieces)	price
MFP-GNK	General MRI Kit	1935.00
MFP-GE2	CTL Coil Pad Kit: GE 1.5T (2)	810.00
MFP-GE3	Table Pad Kit: GE 1.5T, 3.0T (3)	1245.00
MFP-GE5	Table Pad Kit: GE 1.5T, 3.0T (5)	1875.00
MFP-GE4	Table Pad Kit: GE .2T, .35T, .7T (5)	2350.00
MFP-GE7	Table Pad Kit: GE .2T, .35T, .7T (3)	1695.00
MFP-HT1	Table Pad Kit: Hitachi (7)	3065.00
MFP-ST2	Table Pad Kit: Philips, Siemens, Toshiba (5)	1875.00
MFP-PST	Table Pad Kit: Philips, Siemens, Toshiba (3)	1240.00
MFP-PT3	CTL Coil Pad Kit: Philips 1.5T (2)	810.00
MFP-BBK	Breast Biopsy Positioning Kit (10)	2185.00

Sandbags

- All sandbags are filled with sand and are ready to use.
- Heat sealed inner sleeve prevents the leakage of sand.
- All seams are sewn and tear resistant.
- Deep green outer cover is heavy gauge, reinforced vinyl.
- Every sandbag includes a reinforced webbing handle.



Custom Sizes Available!

Includes weight ID tag.



2-lb
4" x 9"
#SBP-02
\$22.00



3-lb
5" x 9"
#SBP-03
\$22.00



5-lb
7" x 9"
#SBP-05
\$28.00



5-lb
5" x 12"
#SBF-05
\$28.00



5-lb
9" x 9"
#SBC-05
\$28.00



7-lb
10" x 10"
#SBG-07
\$32.00



7-lb
6" x 14"
#SBF-07
\$32.00



10-lb
7" x 16"
#SBF-10
\$34.00



10-lb
11" x 11"
#SBC-10
\$34.00



10-lb
11" x 11"
#SBC-HL
\$45.00



10-lb
11" x 11"
#SBC-AC
\$42.00



15-lb
12" x 12"
#SBG-15
\$39.00



20-lb
12" x 14"
#SBC-20
\$39.00

Sandsocks

- Sandsocks are loosely filled sandbags that contour to a broad range of shapes and forms.
 - Stabilizes hard-to-hold and irregular anatomy.
 - No need for additional person to hold the patient.
 - Double seams for strength and longevity.
 - Flexible, heavy gauge, reinforced vinyl.
- (Sorry, sandsocks are not available in Varsity material.)



Sandsocks are only available in "honey" color.



Includes weight ID tag.

1-lb 2" x 8"

#SBS-01
\$28.00 ea.



3-lb 4" x 12"

#SBS-03
\$29.00 ea.



5-lb 5" x 15"

#SBS-05
\$33.00 ea.



10-lb 6" x 20"

#SBS-10
\$36.00 ea.



12-lb 6" x 25"

#SBS-12
\$39.00 ea.



Sandbag Kits *(Save over ordering individually!)*



5-lb cervical

#SBK-CA (Standard) \$53.00 set
Set: (2) 5-lb/9" x 9"



10-lb cervical

#SBK-CB (Standard) \$64.00 set
Set: (2) 10-lb/11" x 11"



20-lb cervical

#SBK-CC (Standard) \$74.00 set
Set: (2) 20-lb/12" x 14"



10-lb AC Joint w/wrist grips

#SBK-AC (Standard) \$80.00 set
Set: (2) 10-lb/11" x 11"



10-lb w/handles

#SBK-HL (Standard) \$85.00 set
Set: (2) 10-lb/11" x 11"



general set (a)

#SBK-GA (Standard) \$219.00 set
Set: (2) 3-lb/5" x 9" (2) 7-lb/6" x 14"
(1) 5-lb/5" x 12" (2) 10-lb/11" x 11"
(1) 5-lb/7" x 9"



general set (b)

#SBK-GB (Standard) \$169.00 set
Set: (2) 3-lb/5" x 9" (2) 7-lb/6" x 14"
(2) 10-lb/11" x 11"



sandsock kit

#SBK-SA \$157.00 set
Set: (1) 1-lb/2" x 8" (1) 10-lb/6" x 20"
(1) 3-lb/4" x 12" (1) 12-lb/6" x 25"
(1) 5-lb/5" x 15"



athletic/bariatric

#SBK-AA (Standard) \$199.00 set
Set: (2) 7-lb/10" x 10"
(2) 10-lb/7" x 16"
(2) 20-lb/12" x 14"

NEW!



Sandbags
not included

Mobile Sandbag Rack

#SBM-100 \$299.00

- Organize & store all sizes of sandbags for easy retrieval.
- 2-sided panel includes 20 hanging hooks.
- Solid base shelf on both sides.
- 3" swivel casters for easy mobility.
- 53"h x 25"w x 19"d.



Transfer Boards

- Allows safe and efficient transfer of patients for general imaging, MRI, and CT.
- Durable, semi-rigid, slick material makes positioning under the patient easy.
- Transfer boards are radiolucent can be used in the imaging field.
- Conveniently located 1½" x 4½" hand-holds allow optimal movement.
- Regular Boards are made of ¾" thick HDPE (high density polyethylene).
- Regular board color is *white*.
- Transfer boards ship at OverSize rates.



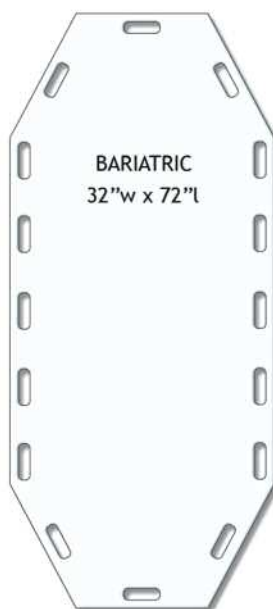
REGULAR BOARDS



#TBS-2372
Qty 1-4: \$185.00 ea.
Qty 5-9: \$160.00 ea.
Qty 10+: \$135.00 ea.



#TBN-1872
Qty 1-4: \$165.00 ea.
Qty 5-9: \$150.00 ea.
Qty 10+: \$130.00 ea.

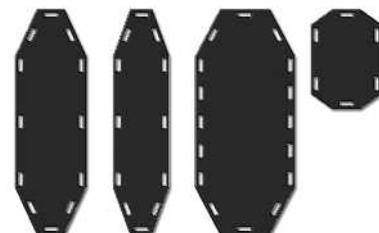


#TBB-3272
\$235.00 ea.



#TBH-2332
\$90.00 ea.

ANTI-STATIC BOARDS



cat.#	description	price
TBS-2372AS	standard	255.00
TBN-1872AS	narrow	245.00
TBB-3272AS	bariatric	575.00
TBH-2332AS	half-size	110.00

- Anti-static boards are made of UHMW (ultra high molecular weight polyethylene).
- Anti-static boards are *black*.
- Standard, Narrow, and Bariatric boards ship at OverSize rates.

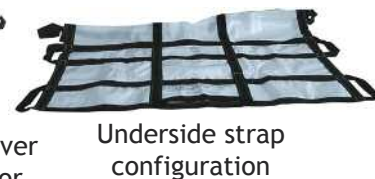
Flexible Transport Mover

- Rated up to 1500-lbs and can be used alone or with an inserted standard or narrow transfer board (not included).
- Intended for limited use and should be replaced regularly.
- Ideal for large or incapacitated patients.
- Non-woven poly, latex-free mover is 80" x 40".



#TBF-4080
\$55.00

1-lb mover
folds up for
easy storage



Underside strap
configuration

Board Wall Rack



#TBR-2P
\$53.00

- Two 6" pegs are angled to keep board from slipping.
- Mounting holes are on vertical centers.
- Steel with white enamel.
- Ships @ 4 lbs.



Lifting Straps

#TBS-ST2
\$30.00/pair

- Convenient nylon straps loop through hand holds.
- Provides better grip.
- Provides extra length for better reach.
- Ships @ 1 lb.

Restraint Straps



- Super strong 2" nylon webbing.
- Secure snap buckle closure.

cat.#	girth	description	price ea.
TBR-S72	72"	standard/half	35.00
TBR-N60	60"	narrow	30.00
TBR-B90	90"	bariatric	40.00

Radiolucent Immobilizer Strap



- Comfortably secures patient position and eliminates motion.
- Helps prevent patient falls without limiting respiration or circulation.
- Ideal for MRI, CT, and Radiology dept.
- Available in 3 widths and 5 lengths for a variety of patients and tables.

- Strap is heavy gauge reinforced vinyl.
- Fast and easy hook and loop closure.
- Easy to remove in case of emergency.



Available Colors

- Blue (default)
- Black
- Green
- Yellow

BLUE is the default color.

Colors are for Immobilizer Straps only. Hook and Loop is black.

cat.#	width x length	price
RDH-060	7" x 60"	75.00
RDH-072	7" x 72"	85.00
RDH-084	7" x 84"	105.00
RDH-096	7" x 96"	125.00
RDH-120	7" x 120"	160.00
RDP-060	14" x 60"	115.00
RDP-072	14" x 72"	125.00
RDP-084	14" x 84"	145.00
RDP-096	14" x 96"	165.00
RDP-120	14" x 120"	210.00
RDW-060	20" x 60"	145.00
RDW-072	20" x 72"	155.00
RDW-084	20" x 84"	175.00
RDW-096	20" x 96"	195.00
RDW-120	20" x 120"	240.00

Universal Restraint

- Universal clamp fits onto most imaging tables.
- 6" nylon strap firmly and comfortably holds the patient to the table with hook and loop closure.
- Brackets are stainless steel for long life.



Extremity Restraint Strapping

- Allows you to customize your restraint needs.
- Each package contains one 30-foot roll of "hook" and one 30-foot roll of "loop" strapping.
- Can be used on patients or equipment.



cat.#	color	width x length	price
RDT-230	Black	2" x 30-ft	50.00
RDT-233	Blue	2" x 30-ft	55.00
RDT-430	Black	4" x 30-ft	110.00
RDT-433	Blue	4" x 30-ft	115.00

Traction Straps

MANUAL #RDT-HN \$99.00

- Straightening the legs easily applies traction.
- Hook and loop hand-hold straps provide secure grip.



Hand-Hold Straps

Low
ers
shoulders
for
cervical
imaging.

AUTOMATIC #RDT-SH \$160.00

- Primarily for elderly or unconscious patients.
- Rigid foot plate provides stable, steady support.



Buckle Straps

Table Pads

- Pads can be used for imaging tables or stretchers.
- Fabricated for durability and longevity.
- Helps maintain complete control of the patient.
- Affordable for each room and table.



- Heavy gauge vinyl covering with welded seams.
- Color: light blue.
- Two brass eyelets in each end for hanging.
- Soft and comfortable.
- Cleans easy with mild cleaner or germicide.
- NOTE: table pads over 1 1/4" (32mm) thick for diagnostic imaging are NOT recommended.



Standard Table Pad

#PAD-51
\$109.00

72" x 23 1/4" x 1"
Ships @ 7 lbs.



Half Pad

#PAD-36
\$89.00

36" x 23 1/4" x 1"
Ships @ 4 lbs.



Standard Table Pads

72" x 23 1/4" x 1"

cat.#	color	covering	price
PAD-51	Light Blue	Standard Vinyl	\$109.00
PAD-53	Green	Reinforced Vinyl	\$189.00
PAD-55	Black	Reinforced Vinyl	\$189.00
PAD-50	Blue	Reinforced Vinyl	\$189.00
PAD-52	Yellow	Reinforced Vinyl	\$189.00
PAD-80	See Page 25	Nylon Fabric	\$159.00

(Edge of pads may show up on some images.)

Pad Storage Rack & Set



- Two hooks on 12" centers.
- Mounts on 16" centers.
- Steel with white finish.
- Ships @ 4 lbs.

#PAD-R2 \$ 53.00 RACK ONLY

#PAD-S1 \$145.00 COMBO SET

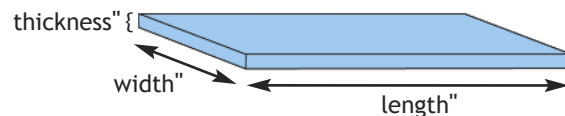
(Combo Set includes: Standard Pad & Rack)



Custom Pads

#PAD-SP Prices start at \$209.00

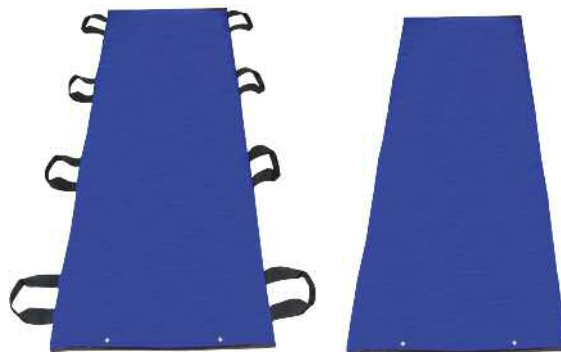
- Rectangular pads made to your specs.
- Submit length" x width" x thickness".
- Pads larger than 80"long x 30"wide x 2"thick may require further quote.
- Custom Pads are NON-RETURNABLE.



Techno-Tuff™ Table Pads

- Constructed of durable mesh laminate reinforced vinyl.
- 72" x 23" x 1" pad is radiolucent.
- Handles allow patients to be easily moved from stretcher to table.
- Low-friction, water proof, stain proof, and antimicrobial.

cat.#	color	description	price
PAD-H8R	Royal Blue	With Handles	\$275.00
PAD-H8K	Black	With Handles	\$275.00
PAD-X8R	Royal Blue	No Handles	\$245.00
PAD-X8K	Black	No Handles	\$245.00



Leg Support



#LGS-09
\$495.00

- Safely supports and positions patient leg.
- Easy to use Posi-Lock height adjustment.
- Lift height range: 14½" to 19".
- 6½" x 9½" calf support comes with nylon covered pad.
- All steel frame with sturdy 9" x 12" base.
- Shipping weight: 14 lbs.



- Provides true 90° Lateral View of Hip.
- Unobstructed Femoral Head and Neck.

Bariatric Leg Support

#LGS-B11
\$535.00



Same as LGS-09, except:

- Extra large 15" x 18" base.
- Shipping weight: 19 lbs.



Lateral Chest Support

#RLC-36 (36" tall support)
\$925.00

#RLC-48 (48" tall support)
\$965.00

- Height adjustable bar provides stability for patients of almost every height.
- Helps reduce re-takes.
- Cast aluminum base easily mounts to the wall.
- Repositionable aluminum bar is comfortable to grip.



Caliper

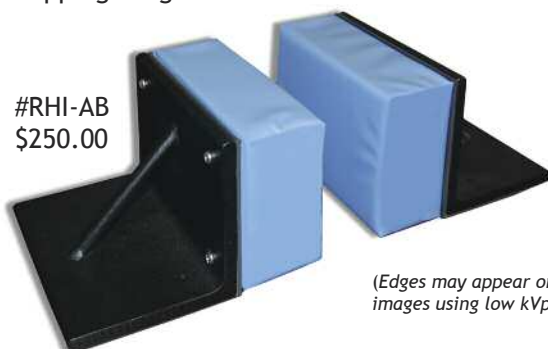
#CAL-21
\$57.00

- Accurately measures body thickness to be x-rayed, up to 21" in depth.
- Calibrated in both inches and cm.
- Made of durable aluminum.
- 1" wide x 21¼" tall x 10⅛" deep.
- Ships @ 1 lb.



Head Immobilizer

- Safely supports and positions patient head.
- Solid steel angles with soft, vinyl covered cushions.
- Blocks with handles weigh 15-lbs each.
- Cushions: 8" w x 6" h x 3" d.
- Shipping weight: 32 lbs.



#RHI-AB
\$250.00

(Edges may appear on images using low kVp.)

Head Paddles

- Ideal for a designated person to keep patient's head comfortable and steady.
- Rigid vinyl discs with comfort-grip handles.
- Coated foam cushions: 7" dia. x 1½" thick.
- Shipping weight: 4 lbs.

#RHI-CP
\$84.00



T-Spray II™

#PDC-507 \$114.00/case

For general use and is ideal for **Ultrasound** transducers, probes and all other equip.



Both Sprays:

- Use after each patient.
- Contains NO alcohol, phenol, glutaraldehyde.
- Effective bactericide, fungicide, & virucide.
- Kills MRSA, Avian Flu & HIV-1.
- Concentrated; just add water.
- 250ml bottles (1-dozen per case).

M-Spray™

#PDM-509 \$114.00/case

For **Mammography** compression plates, receptors & equip.



Lint-Free Wipes

#LFW-2P (1785 total wipes)
\$189.00/case of 15 boxes

- All-purpose 11 1/2" x 12" lint-free wipes.
- Excellent for cleaning equipment, CR-receptors and computers.
- 119 white wipes/dispenser.



Germicidal Wipes



SUPER SANI-CLOTH® Wipes

- Contains the highest range of effectiveness.
- Cleans, disinfects, deodorizes.
- Alcohol content: High @ 55%.
- Recommended Contact Time: 2-minutes or less.
- Popular industry choice for most **IMAGING EQUIPMENT**.
- Also recommended for **KEYBOARDS** and **APRONS**.
- Meets CDC, OSHA and CMS Tag F441 guidelines.

cat.#	wipe size	quantity	price
GWP-P55	6" x 6 3/4"	tub of 160 wipes	\$12.50
GWP-P55CS	6" x 6 3/4"	case of 12 tubs	\$153.00
GWP-PL55	7 1/2" x 15"	tub of 65 wipes	\$15.00
GWP-PL55CS	7 1/2" x 15"	case of 6 tubs	\$90.00
GWP-PW55	5" x 8"	box of 50 packets	\$14.80
GWP-PW55CS	5" x 8"	case of 10 boxes	\$148.00
GWP-PT55	11 1/2" x 11 3/4"	box of 50 packets	\$46.00
GWP-PT55CS	11 1/2" x 11 3/4"	case of 3 boxes	\$138.00



SANI-CLOTH® AF3 Alcohol-Free Wipes

- Contains an excellent range of effectiveness.
- Cleans, disinfects, deodorizes & fragrance-free.
- Alcohol content: ALCOHOL-FREE (less than 0.016%).
- Recommended Contact Time: 3-minutes or less.
- Commonly used for **MAMMOGRAPHY, ULTRASOUND** and most other **IMAGING EQUIPMENT**.
- Meets CDC, OSHA and CMS Tag F441 guidelines.

cat.#	wipe size	quantity	price
GWP-WAF	6" x 6 3/4"	tub of 160 wipes	\$13.50
GWP-WAFCS	6" x 6 3/4"	case of 12 tubs	\$162.00
GWP-WLAF	7 1/2" x 15"	tub of 65 wipes	\$16.50
GWP-WLAFCS	7 1/2" x 15"	case of 6 tubs	\$99.00
GWP-WWAF	5" x 8"	box of 50 packets	\$15.80
GWP-WWAFCS	5" x 8"	case of 10 boxes	\$158.00
GWP-WTAF	11 1/2" x 11 3/4"	box of 50 packets	\$49.00
GWP-WTAFCS	11 1/2" x 11 3/4"	case of 3 boxes	\$147.00



Mammography Exam Capes

- Maintains patient modesty and confidence.
- Provides protection against cross-contamination.
- Comfortable, non-irritating materials.
- Eliminates laundry and replacement costs.



Pink Cape

#GMC-22
\$46.00/case

- Open front/back.
- Soft 3-ply tissue.
- Size: 30" x 21".
- Color: PINK.
- 100 capes per case.



White Cape

#GMC-21
\$39.00/case

- Open front/back.
- Soft 3-ply tissue.
- Size: 30" x 21".
- Color: WHITE.
- 100 capes per case.



Standard Exam Gown

#GXE-55
\$46.00/case

- Open front/back w/ties.
- Soft tissue/poly/tissue.
- Regular size: 30" x 42".
- Color: BLUE.
- 50 gowns per case.



Extrasize Exam Gown

Size: XL
#GXX-58
\$75.00/case

- Open sides w/ties.
- Tissue/poly/tissue.
- Size: 40" x 40".
- Color: BLUE.
- 25 per case.



Stretcher Sheets

#GSS-49
\$61.00/case

- Soft and water resistant.
- 2-ply tissue/poly.
- Size: 40" x 90".
- Color: WHITE/BLUE.
- 50 sheets per case.



Pillow Cases

#GPC-23
\$55.00/case

- Soft and water resistant.
- 2-ply tissue/poly.
- Size: 21" x 30".
- Color: BLUE.
- 100 cases per case.