



[info@independentimaging.org](mailto:info@independentimaging.org)

800-543-4424

REFERENCE: Merrill's Atlas of Radiographic Positioning and Procedures, 9780323073219, text extract, "Each radiograph must include an appropriate marker that clearly identifies the patient's right (R) or Left (L) side. Medico-legal requirements mandate that these markers be present. R and L markers must be used with CR and DR digital imaging. The development of digital imaging and the use of CR and DR have enabled an environment in which the R and L markers can be placed on the image electronically. This is not recommended because of the great potential for error and legal implications. Anatomic markers should be placed on the CR cassette or DR table similar to screen-film cassettes."



#1E \$20.00 ea. set  
R & L - 5/8"  
2 initials - 3/8" or 3 initials - 1/4"  
Without initials, order:  
#4E @ \$12.80/set



#2E \$25.00 ea. set  
RIGHT & LEFT - 1/2" 2-3 initials - 1/4"

Without initials, order:  
#122E @ \$20.00/set



**WORD and ARROW**  
Markers are on page 86!

**Personal Touch Markers**  
are on pages 80-82!



#7E \$23.00 ea. set  
R & L - 1"  
2 initials - 3/8" or 3 initials - 1/4"  
Without initials, order:  
#5E @ \$14.70/set



#6EB \$25.00 ea. set  
R & L - 1/2", arrow - 1", 2-3 initials - 1/4"

Without initials, order:  
#6EA @ \$18.00/set



### Beads Indicate Patient Position



#TA-13 \$30.00 ea. set  
Elite Style R & L - 5/8"  
2 initials - 3/8" or 3 initials - 1/4"



#TA-14 \$25.00 ea. set  
Elite Style R & L - 5/8"  
No initials

### Elite Position Indicator Markers



#TA-137 \$32.00 ea. set  
Elite Style R & L - 1/2"  
2 initials only - 1/4"

Without initials, order:  
#TA-18 @ \$27.00/set

- Elite markers have the most DURABLE aluminum casing.
- RED for "R" markers and misc. words / BLUE for "L" markers.
- Provides the best in QC!
- Identifier markers have high-impact polystyrene casing.
- Enhances quality control with fewer repeat exams.
- Provides basic, yet personalized image identification.



#TA-1 \$18.00 ea. set  
R & L -  $\frac{5}{8}$ "  
2 initials -  $\frac{3}{8}$ " or 3 initials -  $\frac{1}{4}$ "  
Without initials, order:  
#TA-4 @ \$11.40/set



#TA-2 \$24.00 ea. set  
Right & Left -  $\frac{1}{2}$ "  
2 or 3 initials -  $\frac{1}{4}$ "  
Without initials, order:  
#TA-122 @ \$20.00/set

**WORD and ARROW**  
Markers are on page 86!

**Personal Touch Markers**  
are on pages 80-82!



#TA-7 \$22.00 ea. set  
R & L - 1"  
2 initials -  $\frac{3}{8}$ " or 3 initials -  $\frac{1}{4}$ "  
Without initials, order:  
#TA-5 @ \$12.30/set



#TA-002 \$18.00 ea. set  
R & L -  $\frac{5}{8}$ "  
2 initials -  $\frac{3}{8}$ " or 3 initials -  $\frac{1}{4}$ "  
Without initials, order:  
#TA-001 @ \$11.40/set



#TA-17 \$35.00 ea. set  
Identifier Style R & L -  $\frac{7}{8}$ " Position  
2 initials -  $\frac{3}{8}$ " or 3 initials -  $\frac{1}{4}$ "

## Identifier Position Indicator Markers



#TA-16 \$30.00 ea. set  
Identifier Style R & L -  $\frac{7}{8}$ " Position  
No initials

## Personal Touch Colors

*Who said work had to be boring?*



**RED/BLUE SOLID**  
 #TA-1 \$18.00 ea. set  
 R & L - 5/8"  
 2 initials - 3/8" or 3 initials - 1/4"



**PURPLE SOLID**  
 #PT-CP \$18.00 ea. set  
 R & L - 5/8"  
 2 initials - 3/8" or 3 initials - 1/4"



**YELLOW SOLID**  
 #PT-CY \$18.00 ea. set  
 R & L - 5/8"  
 2 initials - 3/8" or 3 initials - 1/4"



**BURNT SIENNA SOLID**  
 #PT-CS \$18.00 ea. set  
 R & L - 5/8"  
 2 initials - 3/8" or 3 initials - 1/4"



**GREEN SOLID**  
 #PT-CG \$18.00 ea. set  
 R & L - 5/8"  
 2 initials - 3/8" or 3 initials - 1/4"



**ORANGE SOLID**  
 #PT-CO \$18.00 ea. set  
 R & L - 5/8"  
 2 initials - 3/8" or 3 initials - 1/4"

## Personal Touch Tie-Dye



**RED/BLUE/PURPLE TIE-DYE**  
 #PT-TR \$18.00 ea. set  
 R & L - 5/8"  
 2 initials - 3/8" or 3 initials - 1/4"



**YELLOW/RED/ORANGE TIE-DYE**  
 #PT-TY \$18.00 ea. set  
 R & L - 5/8"  
 2 initials - 3/8" or 3 initials - 1/4"



**BLUE/YELLOW/GREEN TIE-DYE**  
 #PT-TB \$18.00 ea. set  
 R & L - 5/8"  
 2 initials - 3/8" or 3 initials - 1/4"



## Personal Touch Glitter

*Have fun in what you do!*



**RED/BLUE GLITTER**  
#PT-GR \$18.00 ea. set  
R & L - 5/8"  
2 initials - 3/8" or 3 initials - 1/4"



**PURPLE GLITTER**  
#PT-GP \$18.00 ea. set  
R & L - 5/8"  
2 initials - 3/8" or 3 initials - 1/4"



**YELLOW GLITTER**  
#PT-GY \$18.00 ea. set  
R & L - 5/8"  
2 initials - 3/8" or 3 initials - 1/4"



**BURNT SIENNA GLITTER**  
#PT-GS \$18.00 ea. set  
R & L - 5/8"  
2 initials - 3/8" or 3 initials - 1/4"



**GREEN GLITTER**  
#PT-GG \$18.00 ea. set  
R & L - 5/8"  
2 initials - 3/8" or 3 initials - 1/4"



**ORANGE GLITTER**  
#PT-GO \$18.00 ea. set  
R & L - 5/8"  
2 initials - 3/8" or 3 initials - 1/4"



**PINK GLITTER**  
#PT-GA \$18.00 ea. set  
R & L - 5/8"  
2 initials - 3/8" or 3 initials - 1/4"



**LIGHT BLUE GLITTER**  
#PT-GB \$18.00 ea. set  
R & L - 5/8"  
2 initials - 3/8" or 3 initials - 1/4"

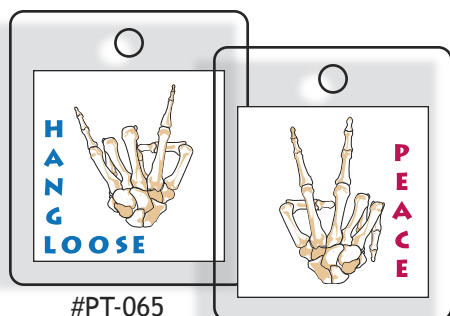
### Personal Touch Shapes



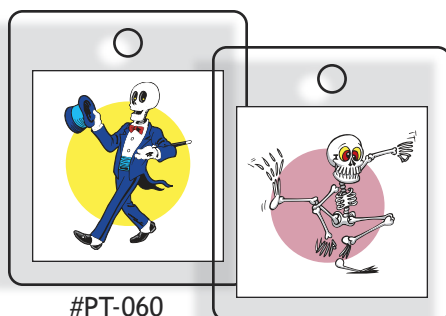
TROPICAL FISH  
#PT-FRB \$20.00 ea. set



SKULLS  
#PT-SKW \$20.00 ea. set



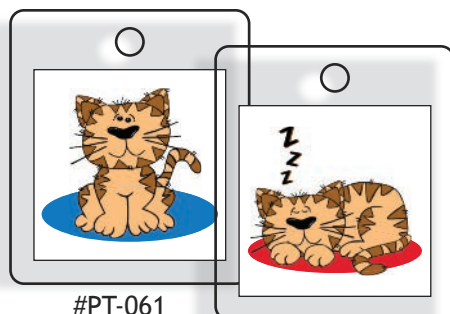
#PT-065



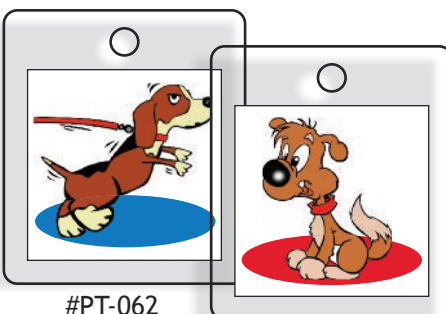
#PT-060



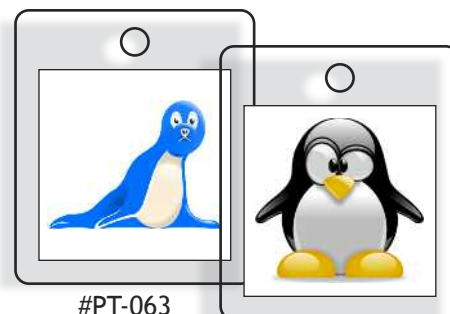
#PT-074



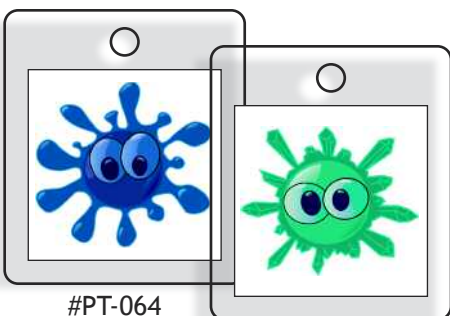
#PT-061



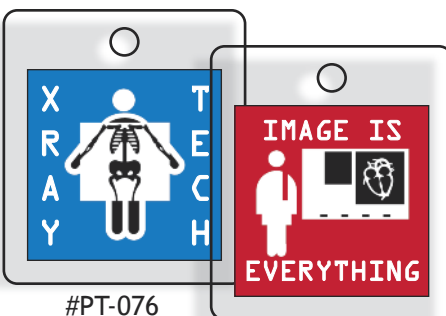
#PT-062



#PT-063



#PT-064



#PT-076

### Personal Touch Photos

\$25.00 ea. set

(All Photo Markers are shown actual size.)

Photo Markers have a clear frame and are available with or without initials.

#### Custom Photo Marker Set

With your mailed-in order, include two different photos (non-returnable) of your kids, pets, etc. The area of each photo you want in your markers must be within a 1" square. We will cut out your photos and construct them into your own unique personal marker set.



#PT-010

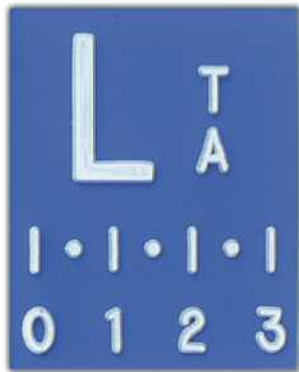
(Custom Set)



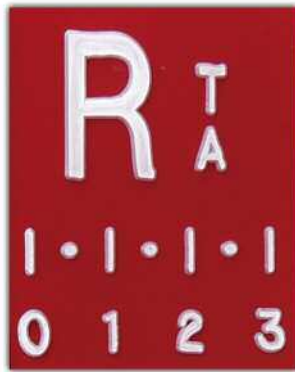
Typical Reverse Side

## Digital Imaging Markers

Make accurate comparisons between life-size (what you see) and image-size (what you get)!



#1DR \$46.00 ea. set  
Digital Style R & L - 3/4"  
2 or 3 initials - 1/4"



- Each marker has a lead 3cm ruler.
- Color coded: L-Blue, R-Red.
- High density lead characters.

*Specially Designed for Digital Imaging*



#2DR \$46.00 ea. set  
Digital Style R & L - 1/2"  
2 or 3 initials - 1/4"

The personalized R & L marker sets or the stand alone 3cm ruler are specifically designed for Teleradiology, CR and DR Imaging, where the image-size does not always match the life-size anatomy.

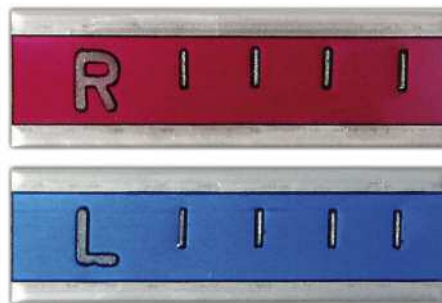
Place a marker on the CR or DR Plate and capture the radiographed anatomy. The image of the unique 3cm ruler gives an immediate visual and measureable cue as to the size of the screen image compared to the life size anatomy.



#3DR \$28.00 ea.  
Digital Style Ruler only

## Wafer-Thin Digital Imaging Markers

*Other Wafer-Thin markers are on p. 84!*



#WTS-DR \$29.00 ea. set  
Digital Style R & L with 3cm spacing

## Super Thin for Slim Bucky Clearance

- Perfect for newer equipment (CR, DR, etc.) with very thin bucky clearance.
- Exceptionally thin markers: <3/32" (2mm).
- Copper filtered for a broad range of KV.
- Elite style and color-coded.

## Radi-O-Paque Extremity Rulers

**45cm**

#CPT-R45  
\$175.00/ea.



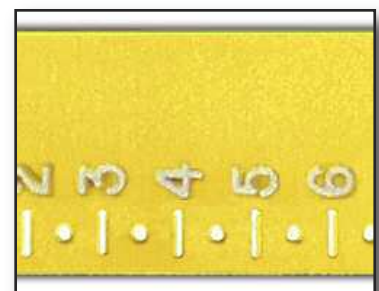
**115cm**

#CPT-R115  
\$275.00/ea.



- Sturdy 1 1/4" wide x 1/8" thick.
- High density lead letters.
- Brilliant YELLOW color.
- Spaced in 0.5cm increments.

Enlarged View





### Wafer Thin



#WTS-1 \$29.00 ea.set  
R & L -  $\frac{3}{8}$ " 2 initials -  $\frac{3}{16}$ "  
Without initials, order:  
#WTS-4 @ \$19.00/set



#WTS-6B \$29.00 ea.set  
R & L -  $\frac{3}{8}$ " 2 initials -  $\frac{3}{16}$ "  
Without initials (with arrow), order:  
#WTS-6A @ \$19.00/set



#WTS-6C \$29.00 ea.set  
R & L -  $\frac{3}{8}$ " 2 initials -  $\frac{3}{16}$ "  
Without initials, order:  
#WTS-6D @ \$19.00/set



WTW-A3 ( $\frac{1}{2}$ " arrow) \$9.00

### Super Thin for Slim Bucky Clearance

- Perfect for newer equipment (CR, DR, etc.) with very thin bucky clearance.
- Exceptionally thin markers:  $<\frac{3}{32}$ " (2mm).
- Copper filtered for a broad range of KV.
- Elite style and color-coded.



(See Wafer Thin Words on p.86)



#RO-107B \$30.00 ea.set  
R & L -  $\frac{3}{4}$ " 2 initials -  $\frac{3}{8}$ "  
Without initials, order:  
#RO-107A @ \$21.50/set

### Oncology, CT and CR

- $\frac{1}{4}$ " super thick, high-density lead letters.
- Designed for Oncology and Industry, and other applications.
- Elite style markers, color-coded and Techno-Aide tough.

Vinyl & Epoxy encased, for longer life!



Ex.: ROW-23  $\frac{3}{4}$ " letters ( $\frac{1}{4}$ "thick)

### Super Thick for High Radiation

The Oncology markers are  $\frac{1}{4}$ " thick and will NOT fit in most low clearance bucky trays.

description	cat.# ( $\frac{1}{4}$ )	price
single letter	ROW-01	\$11.00
2-3 letters	ROW-23	\$14.00
4-5 letters	ROW-45	\$16.00
6-7 letters	ROW-67	\$19.00
8+ letters	ROW-80	\$22.00



#COP-1 \$38.00 set ELITE  
(2 sets of 1E markers: 1 set with copper filter, 1 set without.)

### Copper Filtered

- Copper filtered for High KV.
- High density lead letters.
- Available in ELITE or IDENTIFIER.
- Color-coded, impact resistant.  
(Should not be used for mammography.)



#COP-2 \$35.00 set ELITE

R & L -  $\frac{1}{2}$ ", 2-3 initials -  $\frac{1}{4}$ "

(Filtered & unfiltered on the same marker.)

### Filtered for High KV Exams



### Stencil Clipper

Plated Steel Clipper



#XSCP-10  
\$15.00 ea.

Stenciled  
non-personalized  
R & L.

### Elite Clippers

Double Personalized



#CP-35 \$28.00 ea.  
(2-3 initials)

- Both R & L are on one double clip.
- Durable Stainless Steel clips.
- Color-coded: R side-Red / L side-Blue

Portable & Position Double Clippers



#CP-37  
(port & position)  
\$34.00 ea.



#CP-13  
(position only)  
\$34.00 ea.

Both are  
available  
with  
initials.  
Please  
specify.

### Standard Thin Clipper

- Constructed of high strength Kydex™.
- Extra thin profile, double-sided, 1 7/8" wide.
- R and L: 3/4", with or without initials.
- 2 Initials: 3/8"; 3 initials or words: 1/4".

#CPP-40  
\$25.00 ea.



Side View



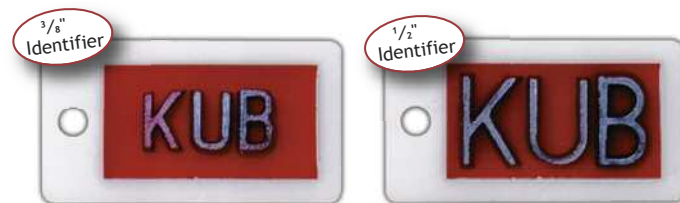
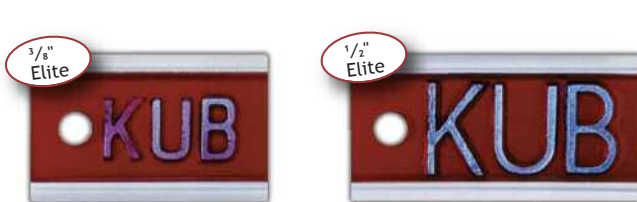
### Gridcap Thin Clipper

- Designed to fit DR, CR receptors with gridcap.
- Constructed of high strength Kydex™.
- Extra thin profile, double-sided, 1 7/8" wide.
- R and L: 3/4", with or without initials.
- 2 Initials: 3/8"; 3 initials: 1/4".

#CPP-60 (with initials)  
#CPP-61 (no initials)  
\$35.00 ea.

**NEW for  
Gridcaps**





### ELITE Words (aluminum casing)

description	example	cat.# (3/8")	price	cat.# (1/2")	price
single letter	3	2E-Y	\$7.50	2E-Z	\$8.50
2-3 letters	EXT	3E-Y	\$10.00	3E-Z	\$12.50
4-5 letters	25 MIN	4E-Y	\$12.50	4E-Z	\$15.50
6-7 letters	STRESS	5E-Y	\$14.00	5E-Z	\$17.50
8+ letters	PORTABLE	6E-Y	\$16.00	6E-Z	\$20.00

*Personalized  
Marker Sets  
are on  
pages 78-85*

### IDENTIFIER Words (polystyrene casing)

description	example	cat.# (3/8")	price	cat.# (1/2")	price
single letter	3	2TA-Y	\$5.50	2TA-Z	\$6.50
2-3 letters	EXT	3TA-Y	\$9.50	3TA-Z	\$10.00
4-5 letters	25 MIN	4TA-Y	\$11.00	4TA-Z	\$11.50
6-7 letters	STRESS	5TA-Y	\$12.00	5TA-Z	\$14.00
8-15 / 8-10	PORTABLE	6TA-Y	\$15.00	6TA-Z	\$17.00



### WAFER THIN Words

(1/4" letters x <3/32" thin)

description	cat.#	price
single letter	WTW-01	\$14.00
2-3 letters	WTW-23	\$16.00
4-5 letters	WTW-45	\$18.00
6-7 letters	WTW-67	\$20.00
8+ letters	WTW-80	\$22.00



### ONCOLOGY Words

(3/4" letters x 1/4" thick)

description	cat.# (3/4")	price
single letter	ROW-01	\$11.00
2-3 letters	ROW-23	\$14.00
4-5 letters	ROW-45	\$16.00
6-7 letters	ROW-67	\$19.00
8+ letters	ROW-80	\$22.00



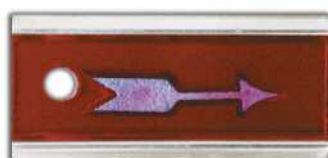
### Wall Boards

- Walnut grain w/ brass hooks.

description	cat.#	price
32 Hook Board	HK-32	\$98.00
16 Hook Board	HK-16	\$78.00
8 Hook Board	HK-8	\$69.00

### These are just a few suggestions from all possible word choices:

2-3 letters	4-5 letters	6-7 letters	8+ letters
AP	FLAT	AP ERECT	ANTERIOR
PA	FLEX	CLOSED	EXTENSION
ANT	INSP	INT ROT	INFUSION
EXP	LEFT	MOBILE	PORTABLE
EXT	OPEN	P EVAC	POST EVAC
INT	POST	POST OP	POST VOID
KUB	TOMO	RECUMB	STANDING
LAO	DECUB	STRESS	VERTICAL W/WEIGHT
LPO	ERECT	SUPINE	WEIGHT BEARING
MAG	HOURS	DELAYED	INJECTION
MIN	PRE OP	FLEXION	INVERSION
OBL	PRONE	LATERAL	SEMI ERECT
RAO	PUREE	MINUTES	VALSALVAR
LOA	RIGHT	OBLIQUE	WT BEARING
25	SCOUT	SUNRISE	COMPARISON
600	60 MIN	UPRIGHT	DECUBITUS



#A-3 \$7.50 each  
Arrow - 1" Elite Style



#TA-A3 \$5.70 each  
Arrow - 1" Identifier Style

### General Marker Set



Identifier Set shown (Board: 12" x 15")  
3/8" letters / 1/2" numbers

Elite	Identifier
#GME-60	#GMI-65
\$540.00	\$490.00

## Cover Tab Stickers

- Ideal for coding mismarked or unmarked film.
- Color coded: L-Blue / R-Red.
- Self-adhesive backing.
- 1 1/4" diameter with square for initials.
- Available in greater quantity discounts!

cat.#	1-3 boxes	4-9 boxes	10+boxes
TAB-R	\$22.00	\$16.00	\$14.00
TAB-L	\$22.00	\$16.00	\$14.00



250  
Stickers  
per box



Take Advantage of  
Quantity Discounts!



Example of the  
MPA-19  
Assorted Pack



## Marking Pens

- Highlights points of interest on a film.
- Wax markers resist smudging, but are not permanent.
- NOT to be used in place of lead markers.
- NOT a legally acceptable marking method.

Order each item per number of packs.

Example: 2ea. #MPY-11  
(will be shipped with 10 yellow pens.)

PENS (5 per pack)

color	cat.#	price/pk
Yellow	MPY-11	\$30.00/pk
Red	MPR-12	\$30.00/pk
White	MPW-13	\$30.00/pk
2-Y, 2-R, 1-W	MPA-19	\$30.00/pk

REFILLS (72 per pack)

color	cat.#	price/pk
Yellow	MRY-21	\$20.00/pk
Red	MRR-22	\$20.00/pk
White	MRW-23	\$20.00/pk
Refills come in pkgs of 72 pieces.		

## Marker Keeper

- Convenient four-pouch vinyl holder for markers.
- Handy clip attaches the Marker Keeper to belt, lapel, pocket, etc.
- Keeps markers in easy reach for quick retrieval.



color	cat.#	price
Red	MKR-11	\$9.90
True Blue	MKB-12	\$9.90
Green	MKG-13	\$9.90
Yellow	MKY-14	\$9.90
Clear	MKC-15	\$9.90
*Assorted (4)	MKA-19	\$35.00

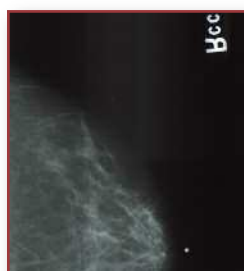
(\*Assorted set does NOT include Clear.)



CHOOSE YOUR  
OWN COLOR!

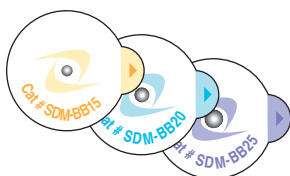
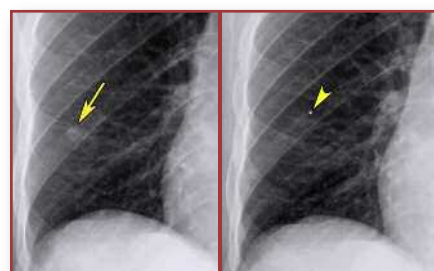
A tool pouch for your markers!





### Skin Markers for General X-Ray, Mammography, MRI, CT and Oncology

**GENERAL IMAGING:** used to identify areas of pain or trauma, soft tissue masses, to document points of entry and exit sites, or mark prominent nipples for identification of nipple shadows on chest x-rays.

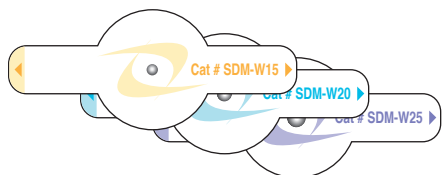


#### Skin Dots

cat. #	BB size		
SDM-BB15	1.5mm		
SDM-BB20	2.0mm		
SDM-BB25	2.5mm		
1-5 bxs	6-14 bxs	15+ bxs	
\$66.00	\$63.00	\$60.00	

(100 per box)

- Artifact/nipple identifier.
- Helps eliminate repeat exams.
- Lead-free.
- Easy-Peel tab.



#### Skin Wings

cat. #	BB size		
SDM-W15	1.5mm		
SDM-W20	2.0mm		
SDM-W25	2.5mm		
1-5 bxs	6-14 bxs	15+ bxs	
\$69.00	\$66.00	\$63.00	

(100 per box)

- Artifact/nipple identifier.
- Extra support for larger, more prominent nipples.
- Lead-free.
- Easy-Peel tab.

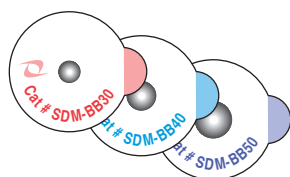


#### Skin Strip

cat. #	BB size		
SDM-NS25	2.5mm		
1-5 bxs	6-14 bxs	15+ bxs	
\$69.00	\$66.00	\$63.00	

(100 per box)

- Lead-free nipple identifier.
- Ideal for larger, more prominent nipples.
- Adhesive-free nipple zone.

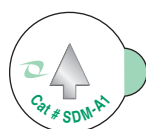


#### Skin Dots (Rad/Onc)

cat. #	BB size		
SDM-BB30	3.0mm		
SDM-BB40	4.0mm		
SDM-BB50	5.0mm		
1-5 bxs	6-14 bxs	15+ bxs	
\$123.00	\$118.00	\$113.00	

(50 per box)

- Lead-free artifact identifier.
- Larger BBs for Radiology and Oncology.
- Easy-Peel tab.

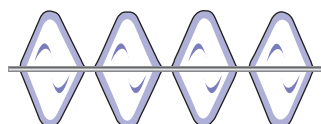


#### Skin Arrow (Rad/Onc)

cat. #	length		
SDM-A1	7.0mm		
1-5 bxs	6-14 bxs	15+ bxs	
\$103.00	\$99.00	\$95.00	

(100 per box)

- Lead-free arrow pointer.
- Highlights areas of interest for Radiology and Oncology.
- Easy-Peel tab.



#### Skin Line

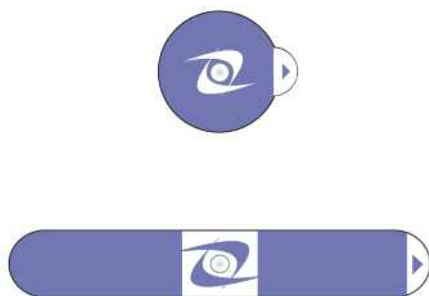
cat. #	line size		
SDM-S3	1.0mm		
1-5 bxs	6-14 bxs	15+ bxs	
\$83.00	\$79.00	\$75.00	

(120"/305cm per box)

- Lead-free scar identifier.
- Line contours to complex scar tissue.
- Flexible adhesive tabs; no scissors required.



### Digital Mammography Skin Markers



#### Digital Dot

cat.#	BB size	
SDM-BB23	2.3mm	
1-5 bxs	6-14 bxs	15+ bxs
\$66.00	\$63.00	\$60.00

(100 per box)

- Lead-free nipple identifier.
- Highlights areas of interest for digital and analog imaging.
- Easy-Peel tab.

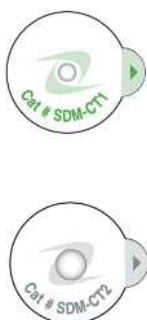
#### Digital Strip

cat.#	BB size	
SDM-NS23	2.3mm	
1-5 bxs	6-14 bxs	15+ bxs
\$69.00	\$66.00	\$63.00

(100 per box)

- Lead-free nipple identifier.
- Ideal for larger, more prominent nipples.
- Adhesive-free nipple zone.

### CT Skin Markers



#### CT Dot: 2.3mm

cat.#	BB size	
SDM-CT1	2.3mm	
1-5 bxs	6-14 bxs	15+ bxs
\$89.00	\$84.00	\$80.00

(50 per box)

- Lead-free 2.3mm marker.
- Highlights areas of interest for Radiology and CT.
- Easy-Peel tab.

#### CT Dot: 4.0mm

cat.#	BB size	
SDM-CT2	4.0mm	
1-5 bxs	6-14 bxs	15+ bxs
\$89.00	\$84.00	\$80.00

(50 per box)

- Lead-free 4.0mm marker.
- Highlights areas of interest for Radiology and CT.
- Easy-Peel tab.

### Multi-Modality Skin Markers



#### Nuclear Med /PET

cat.#	hole size	
MM3003	5mm	
1-5 bxs	6-14 bxs	15+ bxs
\$239.00	\$234.00	\$229.00

(50 per box)

- 2mm center hole suitable for injection of radioisotope.
- Highlights areas of interest for Nuc. Med., PET, CT and MRI.

#### Therapy / Radiology

cat.#	hole size	
MM3005	5mm	
1-5 bxs	6-14 bxs	15+ bxs
\$199.00	\$194.00	\$189.00

(50 per box)

- 2mm center hole suitable for conventional hypodermic needle.
- Highlights areas of interest for Oncology and Radiology.

#### CT / MRI

cat.#	hole size	
MM3007	solid, no hole	
1-5 bxs	6-14 bxs	15+ bxs
\$214.00	\$209.00	\$204.00

(50 per box)

- No center hole; appears as bright object on CT and MRI scans.
- Also highlights areas of interest for radiology and mammography.

### Economy Nipple-Artifact Markers

#LNA-20  
\$50.00



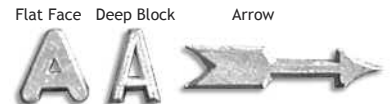
- Encapsulated 2mm lead ball.
  - Used to mark nipple, lesion, scar, artifact, etc.
  - Neutral color, peel-off, self-adhesive backing.
  - Non-sterile.
  - 100 markers mounted on ten convenient strips.
- (This product contains lead.)

If you have any questions about the size characters you need or are looking for additional sizes and styles, please call our customer service department, or mail us a sample so that we may send you exactly what you're looking for.



## UNmounted Lead Characters

style	( $\frac{3}{16}$ " )	( $\frac{1}{4}$ " )	( $\frac{3}{8}$ " )	( $\frac{1}{2}$ " )	( $\frac{5}{8}$ " )	(1" R&L only)	(1" arrow)
FLAT FACE	XTUF-36 .49	XTUF-14 .49	XTUF-38 .49	XTUF-12 .59	XTUF-58 .59	XTUF-01 .99	X
DEEP BLOCK	X	XTUB-14 .89	XTUB-38 .99	XTUB-12 .99	(see Flat Face)	X	X
ARROWS	X	XTUA-14 .99	X	XTUA-12 .79	X	X	XTUA-01 .99



"Loose" lead letters & numbers.

## Individual Mounted Characters (Flat Face)

cat.#	lead/plastic size	price	comments
XTSF-3658	$\frac{3}{16}$ " on $\frac{5}{8}$ "	.79	Fits: LLH-58, LLH-2, LLH-3, Veri-Thin
XTSF-3634	$\frac{3}{16}$ " on $\frac{3}{4}$ "	.79	Fits: Legal (regular)
XTSF-1458	$\frac{1}{4}$ " on $\frac{5}{8}$ "	.79	
XTSF-1434	$\frac{1}{4}$ " on $\frac{3}{4}$ "	.79	
XTSF-1478	$\frac{1}{4}$ " on $\frac{7}{8}$ "	.79	Fits: Eclipse, Perfection
XTSF-1234	$\frac{1}{2}$ " on $\frac{3}{4}$ "	.79	
XTIF-3658	$\frac{3}{16}$ " on $\frac{5}{8}$ "	.79	Fits: Ideal (special offset mounting)



Characters are mounted on CLEAR flat plastic tabs to fit a variety of letter holders.

## Flat Surface Mounted Words (Flat Face)

description	example	cat.#	price	cat.#	price	cat.#	price	cat.#	price
single letter	3	XVFW-0136	...79	XVFW-0114	...79	XVFW-0112	...89	XVFW-0101	1.29
2-3 letters	EXT	XVFW-2336	1.99	XVFW-2314	1.99	XVFW-2312	1.99	XVFW-2301	3.49
4-5 letters	25 MIN	XVFW-4536	3.49	XVFW-4514	3.49	XVFW-4512	3.69	XVFW-4501	5.99
6-7 letters	STRESS	XVFW-6736	4.99	XVFW-6714	4.99	XVFW-6712	5.29	XVFW-6701	8.79
8+ letters	PORTABLE	XVFW-8036	6.29	XVFW-8014	6.29	XVFW-8012	6.49	XVFW-8001	9.99
Lead/Plastic Sizes		$\frac{3}{16}$ " on $\frac{3}{4}$ "		$\frac{1}{4}$ " on $\frac{3}{4}$ "		$\frac{1}{2}$ " on $\frac{3}{4}$ "		1" on $\frac{1}{2}$ "	



Words made from Mounted Letters glued to the surface of a single CLEAR vinyl strip.

## Lead Letter Case

#XSLC-36 \$40.00

- Injection Molded Box.
- 36 scoop-bottom compartments (for A-Z and 0-9).
- Side compartment for holder.

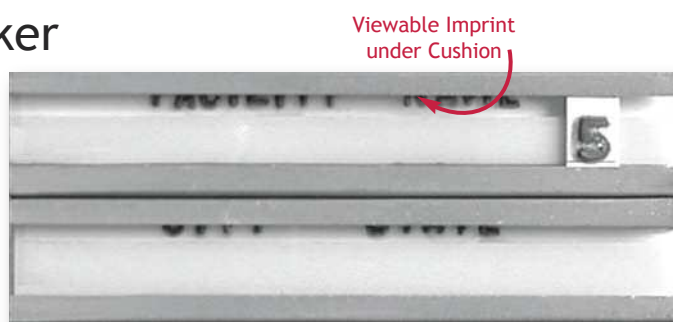




### Ideal Cushion Marker

#XSIC-21 \$50.00 ea.  
Holder only.  $3\frac{1}{2}" \times 1\frac{5}{16}"$

Double channel with cushions;  
imprint in the upper section  
of each channel.



#XSIC-22 \$135.00 ea set  
Complete Set Includes:  
1ea. holder  
2ea. A-Z  
4ea. 0-9  
2ea. A, E, I, O, U  
1ea. 36-letter case

(Replacement characters:  
 $\frac{3}{16}"$  on  $\frac{5}{8}"$  plastic tabs, offset.  
Reorder #XTIF-3658)

### Eclipse Cushion Marker

#XSEC-11 \$45.00 ea.  
Holder only.  $3\frac{1}{2}" \times 1\frac{5}{16}"$

Single channel with cushion;  
imprint above and below the  
centerline.



#XSEC-12 \$90.00 ea set  
Complete Set Includes:  
1ea. holder  
2ea. R, L  
4ea. 0-9  
1ea. 36-letter case

(Replacement characters:  
 $\frac{1}{4}"$  on  $\frac{7}{8}"$  plastic tabs.  
Reorder #XTSF-1478)

### Legal Marker

#XSLG-21 \$48.00 ea.  
Holder only.  $3\frac{1}{2}" \times 1\frac{5}{8}"$

Double aluminum channels;  
imprint between the two  
channels.



#XSLG-22 \$120.00 ea set  
Complete Set Includes:  
1ea. holder  
2ea. A-Z  
4ea. 0-9  
2ea. A, E, I, O, U  
1ea. 36-letter case

(Replacement characters:  
 $\frac{3}{16}"$  on  $\frac{3}{4}"$  plastic tabs;  
Reorder #XTSF-3634)

### Veri-Thin Legal

#XSVL-21 \$48.00 ea.  
Holder only.  $3\frac{1}{2}" \times 1\frac{13}{16}"$

Double aluminum channels;  
imprint down and in between  
the two channels.

Great for  
Bucky Trays!



#XSVL-22 \$120.00 ea set  
Complete Set Includes:  
1ea. holder  
2ea. A-Z  
4ea. 0-9  
2ea. A, E, I, O, U  
1ea. 36-letter case

(Replacement characters:  
 $\frac{3}{16}"$  on  $\frac{5}{8}"$  plastic tabs.  
Reorder #XTSF-3658)

### Perfection

#XSPF-11 \$39.00 ea.  
Holder only.  $3\frac{1}{2}" \times 1\frac{5}{16}"$

Single aluminum channel;  
imprint above and below  
the channel.



#XSPF-12 \$90.00 ea set  
Complete Set Includes:  
1ea. holder  
2ea. R, L  
4ea. 0-9  
1ea. 36-letter case

(Replacement characters:  
 $\frac{1}{4}"$  on  $\frac{7}{8}"$  plastic tabs.  
Reorder #XTSF-1478)